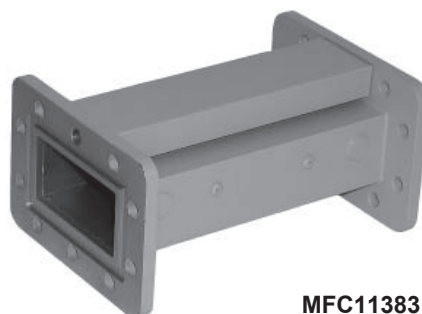


**TI Filter, C Band Radar Elimination Filter (3.6 – 4.2 GHz)**

Similar in function to the Super-Extended model, this bandpass filter provides ultra-selectivity within those regions of the world receiving the Extended C-Band (600 MHz passband) making it an ideal filter choice for eliminating interference from Military Radar, WIMAX and any other out-of-band communications.



**MFC11383**

**Specifications:**

Passband:	3.6 - 4.2 GHz
Passband Loss:	0.5 dB approx @ Fo 1.0 dB Typ @ Band edges
Return Loss:	12 dB (Min) 14 dB (Typ)
Rejection:	25 dB Typ @ 3.55 GHz and 4.25 GHz
Flanges*:	CPR229G (Input) CPR229F (Output)

\* Half gasket is supplied with each model

