

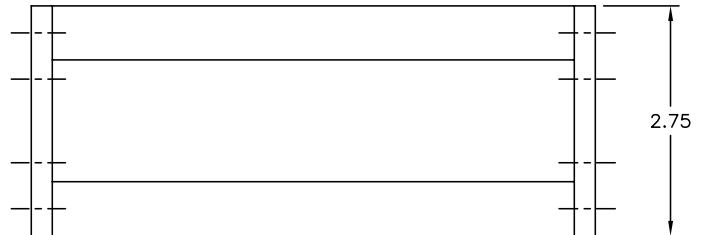
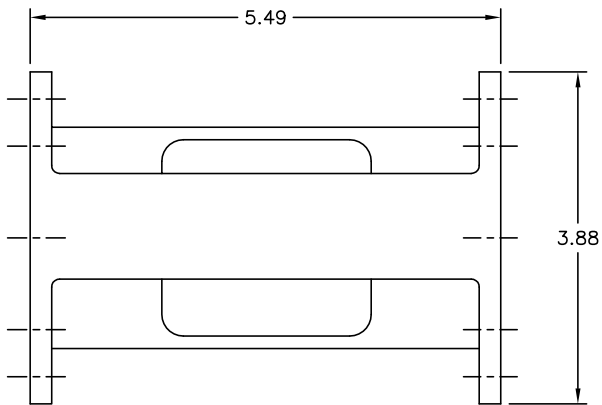
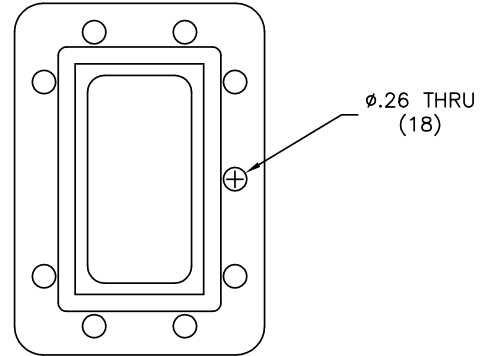


## C band Interference Elimination Filter, 3.8 – 4.2 GHz

**MFC-20158**

### SPECIFICATIONS

Passband:	3.8 to 4.2 GHz
Insertion Loss:	0.5 dB Approx. @ Fo 1.0 dB Typ @ 3.8 GHz
VSWR:	1.5:1 Typ
Group Delay Variation	8 nS Approx.
Rejection:	30 dB Typ @ 4.40 - 4.50 GHz 40 dB Typ @ 3.60 – 3.76 GHz 60 dB Typ @ 3.40 – 3.60 GHz 60 dB Typ @ 3.76 & 4.50 GHz
Flanges:	CPR229G (Input) CPR229F (Output)



Esatcom Inc.  
[www.esatcom.com](http://www.esatcom.com)

Tel:  
718.276.0800

Email:  
[sales@esatcom.com](mailto:sales@esatcom.com)