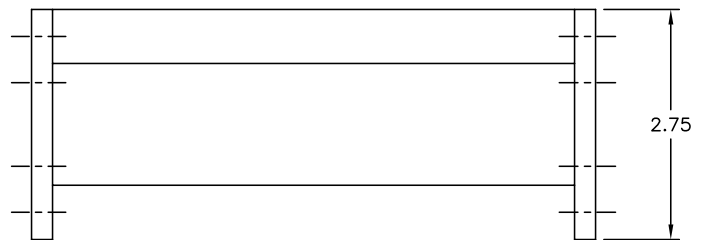
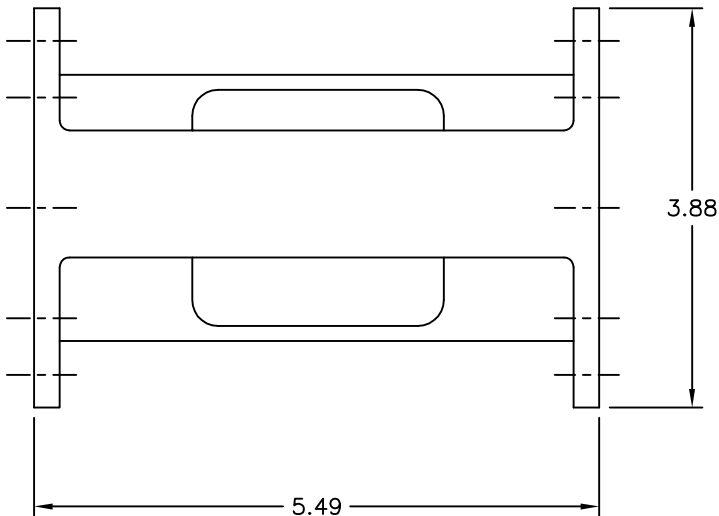
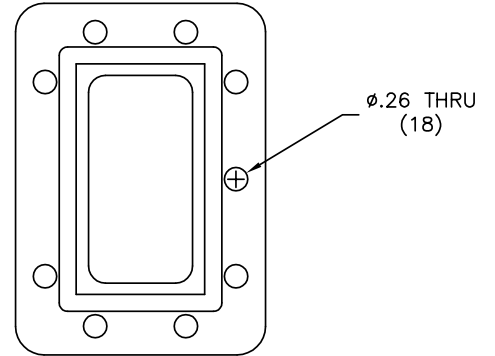


C Band Bandpass Filter, 3.5 – 4.2 GHZ

MFC-20255

SPECIFICATIONS

Passband:	3500 – 4200 MHz
Passband Loss:	0.5 dB TYP @ 3500 MHz 0.3 dB TYP @ 3850 MHz 0.8 dB TYP @ 4200 MHz
VSWR:	1.5:1 MAX
Rejection:	80 dB MIN @ 3400 MHz 25 dB MIN @ 4250 MHz 35 dB TYP @ 4300 MHz
Flanges:	CPR229G (Input) CPR229F (Output) Half Gasket Supplied with Each Unit



Esatcom Inc.
www.esatcom.com

Tel:
718.276.0800

Email:
sales@esatcom.com