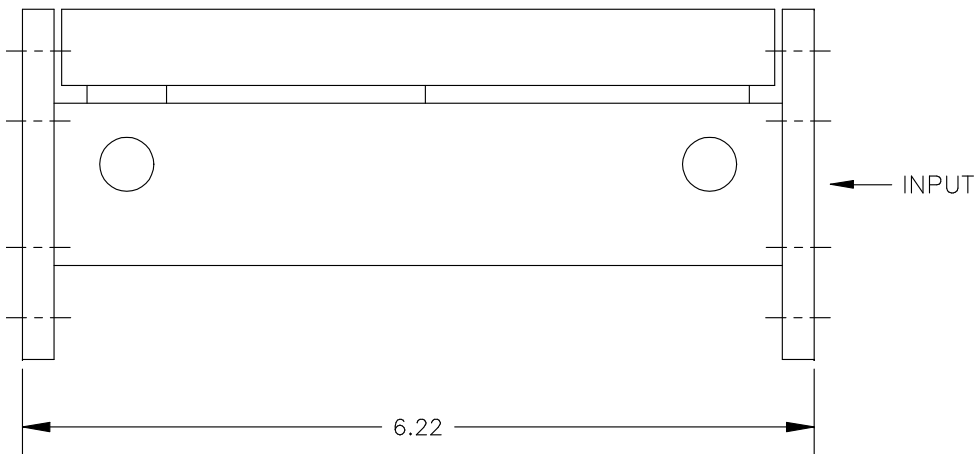
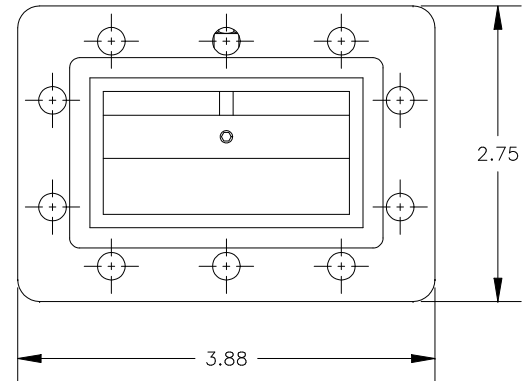


**C band Filter**

**MFC-13961-3900-4200**

**SPECIFICATIONS**

Passband:	3900 – 4200 MHz
Passband Insertion Loss:	1.25 dB TYP
Passband VSWR:	1.5:1 TYP
Rejection:	25 dB MIN @ 3845 & 4255 MHz
Flanges:	CPR229G (Input) CPR229F (Output) Half Gasket Supplied with Each Unit



\*Unless specified – All tolerances  $\pm .030$



Esatcom Inc.  
[www.esatcom.com](http://www.esatcom.com)

Tel:  
718.276.0800

Email:  
[sales@esatcom.com](mailto:sales@esatcom.com)