

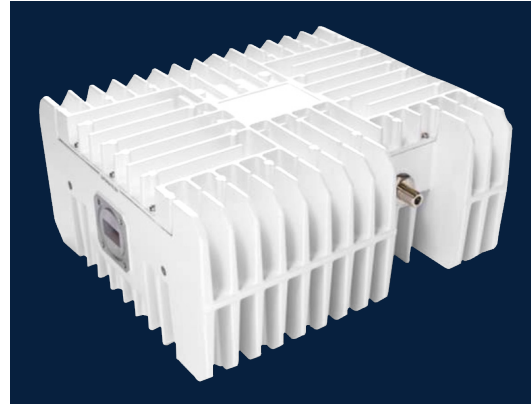


BUC

KU-BAND 10W

ELMTBKU010

ELEMENT SERIES



SPECIFICATIONS

Output Power (P1dB)	39.5 dBm min.
Output Power (Psat)	40 dBm min.
Phase Noise (SSB) max.	-60 dBc/Hz at 100 Hz -70 dBc/Hz at 1t kHz -80 dBc/Hz at 10 kHz -90 dBc/Hz at 100 kHz
Linear Gain	67 dB typ., 62 dB min., 72 dB max.
Gain Flatness:	Over Full Band ≤ 4.0 dB p-p Over Any 54 MHz ≤ 1.5 dB p-p Over Temperature ≤ 4.0 dB p-p
Output Spurious:	In-Band ≤ -60 dBc Out-of-Band ≤ -50 dBc
Input VSWR	2.0 : 1 max.
Output VSWR	2.0 : 1 max.

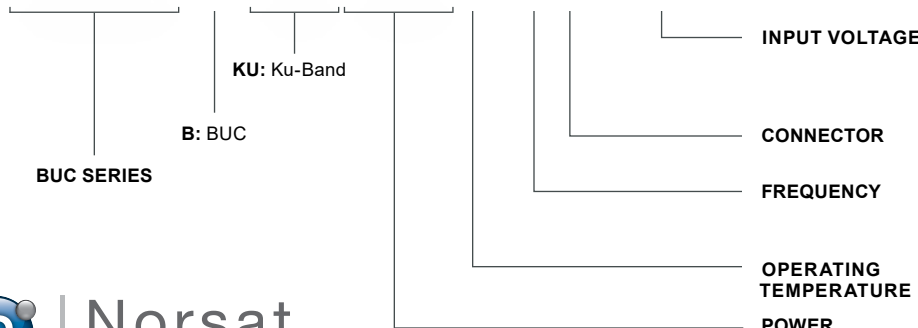
Input Voltage	+18 to +24V DC +36 to +60V DC 85 to 265V AC via MS Connector
Power Consumption	DC: 100W max. AC: 130W max.
Input (waterproof)	F-Connector (75 Ohm) N-Connector (50 Ohm)
Output (waterproof)	WR-75G waveguide grooved
Dimensions (L x W x H)	220 mm x 194.2 mm x 103.5 mm (8.66 in x 7.64 in x 4.07 in)
Weight	4.5 kg (9.92 lb)
Operating Temperature	-40 to +55°C -40 to +60°C
Storage Temperature	-40 to +80°C
Humidity	0-100% condensing
External Ref Freq	10 MHz (sine-wave), -5 to +5 dBm
Enclosed Accessories	Screws, Gasket

FREQUENCY BANDS

	S: Standard	E: Extended	C: Band C
Transmit Frequency (GHz)	14.0 - 14.5	13.75 - 14.5	13.75 - 14.25
L.O. Frequency (GHz)	13.05	12.80	12.80
IF Frequency (MHz)	950 - 1450	950 - 1700	950 - 1450

HOW TO ORDER

ELMTBKU010T-EF-MS



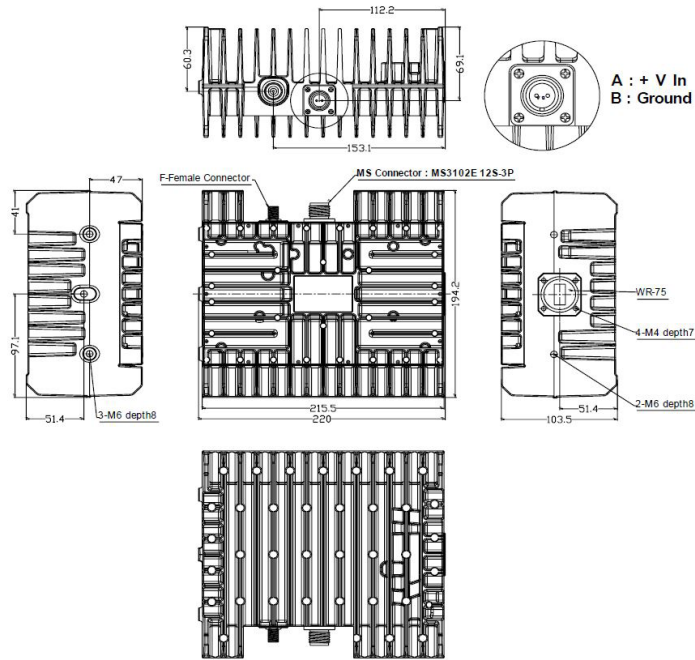
BLANK: +18 to +24V DC via IFL
MS: +18 to +24V DC via MS Connector
H: +36 to +60V DC via IFL
HMS: +36 to +60V DC via MS Connector
A: AC Power via MS Connector
F: 75 Ohm
N: 50 Ohm
S: Standard
E: Extended
C: Band C
BLANK: -40 to +55 °C
T: -40 to +60 °C
010: 10W



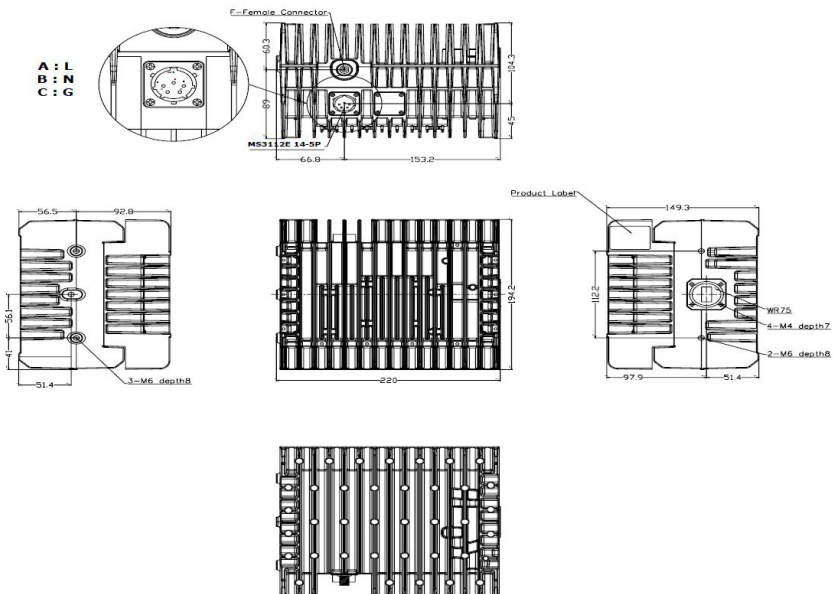
KU-BAND 10W BUC: ELMTBKU010

MECHANICAL DIAGRAM

DC Power



AC Power



Esatcom Inc
Norsat authorized distributor
www.esatcom.com

Tel
718.276.0800

Email
sales@esatcom.com