



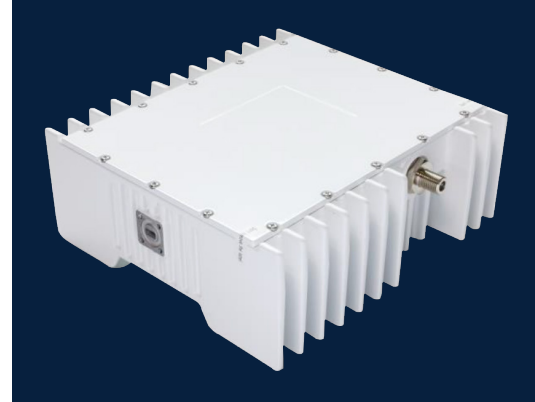
BUC

KA-BAND 4W 5W

ELMTBKA

ELEMENT SERIES

SPECIFICATIONS



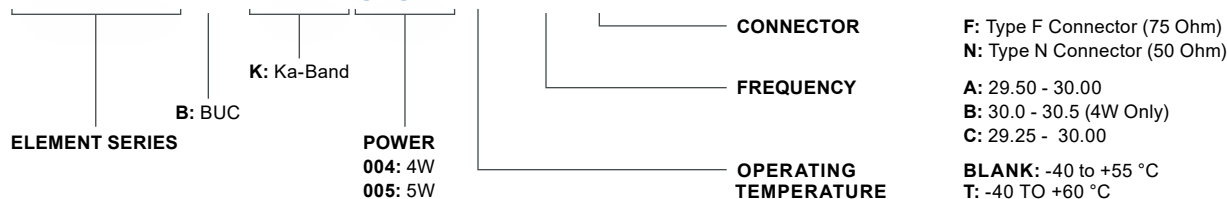
	ELMTBKA004	ELMTBKA005	ELMTBKA004	ELMTBKA005
Output Power (P1dB)	36 dBm min.	37 dBm min.	Input Voltage	+15V to +30V DC
Output Power (Psat)	36.5 dBm min.	37.5 dBm min.	Power Consumption	60W max.
Phase Noise (SSB) max.	-65 dBc/Hz at 100Hz -75 dBc/Hz at 1kHz -85 dBc/Hz at 10kHz -95 dBc/Hz at 100kHz		Input (waterproof)	Type F Connector (75 Ohm) Type N Connector (50 Ohm)
Linear Gain	58 dB typ., 53 dB min., 63 dB max.		Output (waterproof)	WR28
Gain Flatness: Over Full Band	≤ 4.0 dB p-p		Dimensions (L x W x H)	176.1 mm x 161.5 mm x 65 mm (6.94 in x 6.36 in x 2.56 in)
Gain Flatness: Over Any 54 MHz	≤ 1.5 dB p-p		Weight	1.8 kg (3.97 lb)
Gain Flatness: Over Temperature	≤ 4.0 dB p-p		Operating Temperature	-40 to +55°C -40 to +60 °C
Output Spurious: In-Band	≤ -60 dBc		Storage Temperature	-40 to +75°C
Output Spurious: Out-of-Band	≤ -60 dBc		Humidity	0-100% condensing
Input VSWR	2.0 : 1 max.		External Ref Freq	10 MHz (sine-wave), -5 to +5 dBm
Output VSWR	2.0 : 1 max.		Enclosed Accessories	Screws, Gasket

FREQUENCY BANDS

	Band A	Band B (4W Only)	Band C
Transmit Frequency (GHz)	29.50 - 30.00	30.0 - 30.5	29.25 - 30.00
L.O. Frequency (GHz)	28.55	29.05	28.30
IF Frequency (MHz)	950 - 1450	950 - 1450	950 - 1700

HOW TO ORDER

ELMTBKA004T-AN





C-BAND 4W 5W BUC: ELMTBKA

MECHANICAL DIAGRAM

