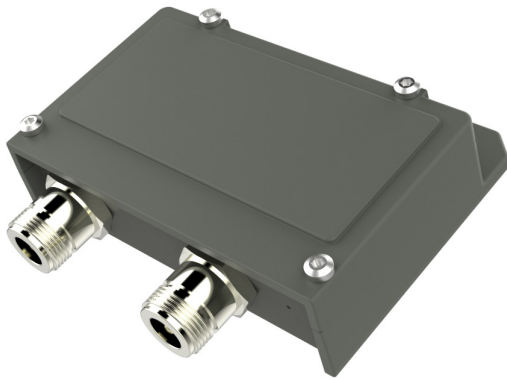


# AGC Line Amplifier L-Band

## Key features



- Automatic gain 0 to 30 dB (AGC)
- Outdoor rated (IP 67)
- Wide operating temperature range
- High P1 dB and IP3
- Available with F, N or SMA connectors
- Separate DC input as option

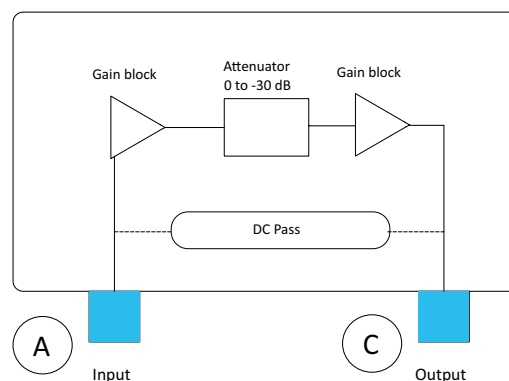
### Description

The AGC (Automatic Gain Control) Line Amplifier 0-30 dB is intended for situations where you need a constant level output from a LNB. Due to its very high IP3 together with the AGC it is usually possible to place the unit very close to the LNB.

Available with F-, N- or SMA-connectors.

DC bypass is standard. Options include Separate DC power input via connector (F, N or SMA) or via cable (pigtail).

### Standard configuration



Explore our full  
product range  
in this category



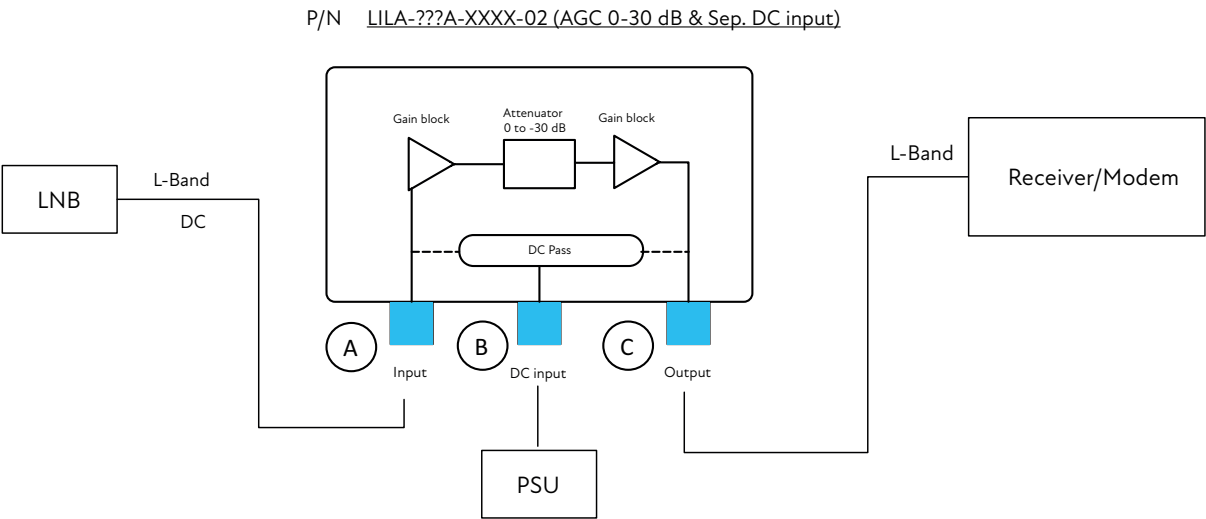
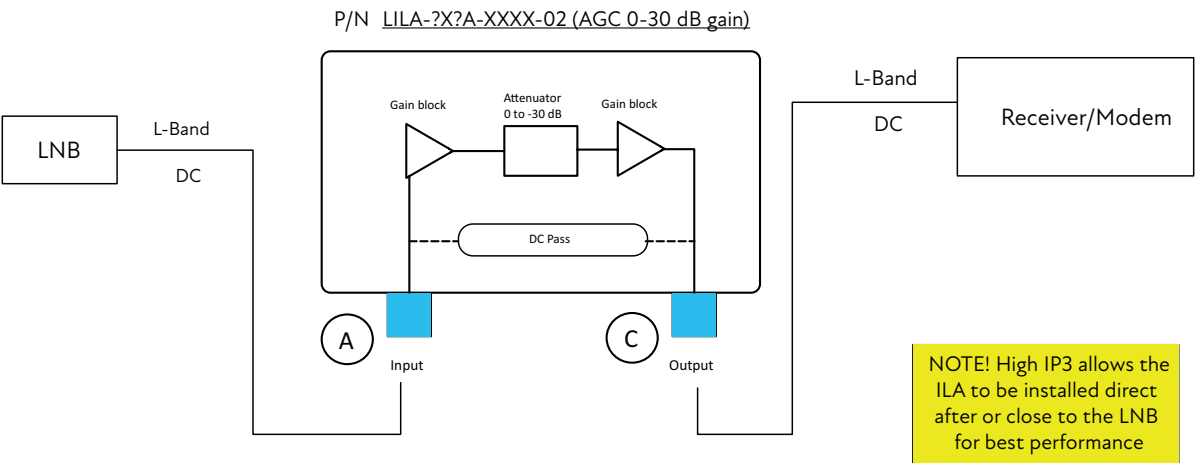
# AGC Line Amplifier L-Band

## Technical specifications

GENERAL	Frequency range	950-2150 MHz
	DC input	+12 to +28 V, 700 mA max. through output, input or via separate port
	Gain typ.	0-30 dB @ 950 - 2150 MHz
	Gain Flatness	±0.2 dB within 30 MHz, ±1 dB within full band
	Output P1dB	+17 dBm typ.
	Output IP3	+33 dBm at max. gain typ.
	Input IP3	+20dBm at min. gain typ.
	Group delay	± 1 ns max.
	VSWR in/out	1.9:1 typ.
	Noise Figure / Noise Temperature	5 dB / 627 K @ max. gain, 8 dB / 1540 K @ mid. gain, 18 dB / 18008K @ min. gain.
	Level detector	Total average power level in the range 950-2150MHz
	Output level	Internally adjustable between -25dBm and +10dBm (total power). Factory preset @ 0dBm
	Modulation Compatibility	PSK, QAM, FM
	Dimensions	96 x 28 x 89 mm ( N connectors )
	Weight	209 g ( F & SMA connectors ), 249 g ( N connectors )
	Temperature Range	Storage and operating: -40 to +80°C, -40 to +176°F
	MTBF	MTBF as per MIL-HDBK-217F Notice 2: Environmental Condition GF (Ground Fixed): >9000000 hours, Environmental Condition AIC (Airborne, Inhabited, Cargo): >45000000 hours, Quality level: Commercial, Temperature used for MTBF calculation: +35°C Ambient
	Ingress protection code	IP 67
	Material & Finish	Die-cast aluminium, Powder coated
	Input connector (A)	SMA-type 50Ω female, N-type 50Ω female or F-type 75Ω female
	Output Connector (C)	SMA-type 50Ω female, N-type 50Ω female or F-type 75Ω female
Options		Separate DC input (via F / N / SMA-connector, or cable) with integrated DC-block(s)

# AGC Line Amplifier L-Band

## Installation examples



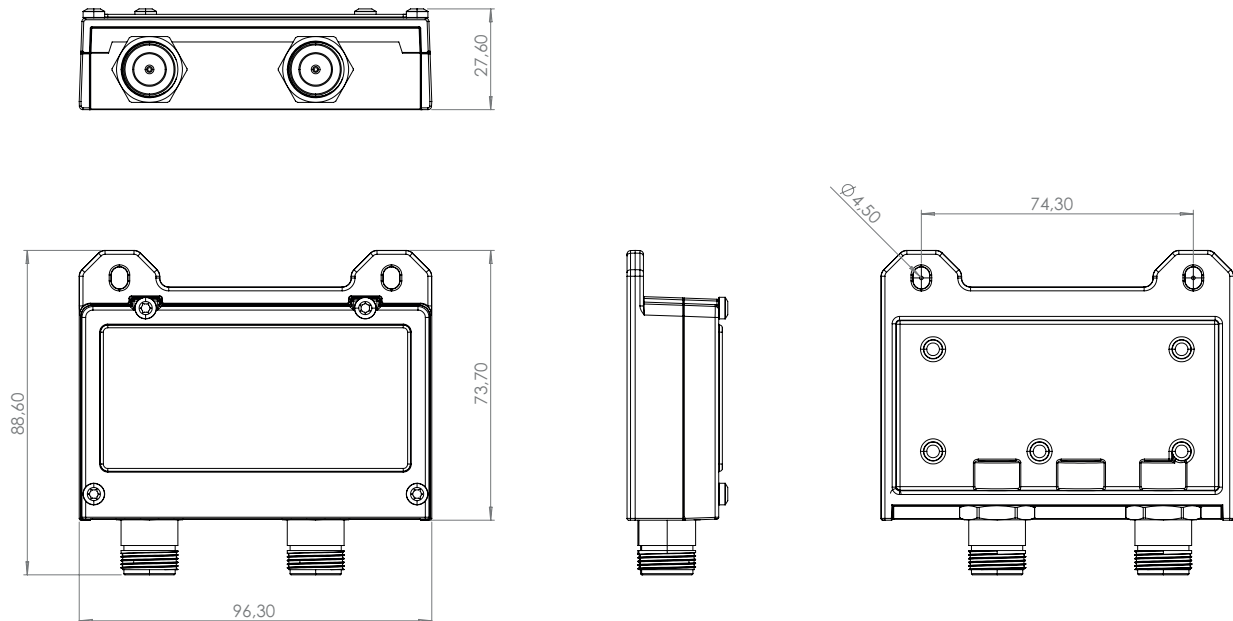
Part number designation for the ILA AGC 0-30 dB

Model	ILA input Connector A		Sep. DC input B		ILA output Connector C		Type		DC Block A	DC Block C	Future use	Future use	Version
LILA	?		?		?		A		?	?	X	X	02
	0	F	X	No	0	F	A	AGC 0-30 dB gain	X	No DC block			
	5	N	0	F	5	N							
	8	SMA	5	N	8	SMA			1	DC Block			
			8	SMA									
			9	Pigtail									

Example: AGC Line Amplifier with N connectors + separate DC input (pigtail) and DC block at Output = LILA-595A-X1XX-02

# AGC Line Amplifier L-Band

## Technical Drawing



Professional Satcom Frequency Converters & Components. All products are fully CE and RoHS compliant and every unit includes full documentation of performance tests and quality control. Please contact [sales@smw.se](mailto:sales@smw.se) to configure or customize the unit to your needs. Visit [smw.se](http://smw.se) or scan QR code to see our full product range and request a quote.

