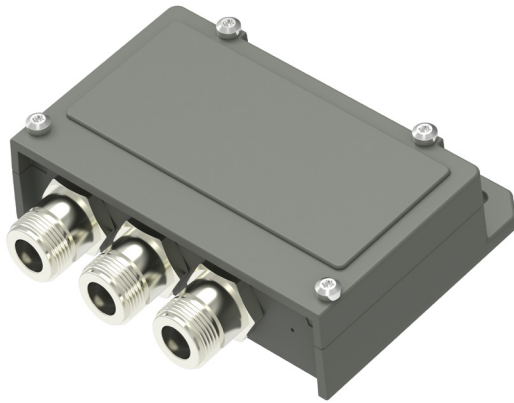


BiasTee DC inserter L-Band

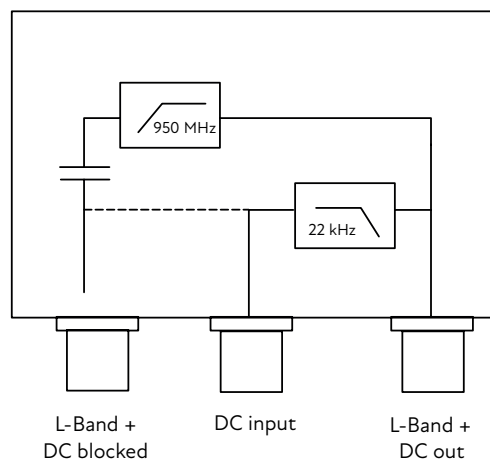
Key features



- Low through loss for L-Band
- Outdoor rated (IP 67)
- Wide operating temperature range
- DC/L-Band diplexing
- Available with F, N or SMA connectors

Description

The Bias-Tee is used when a external DC input is needed ie Receiver / Modem don't have DC out or the installation require an external DC feed. Available with F, N or SMA connectors.



Explore our full
product range
in this category



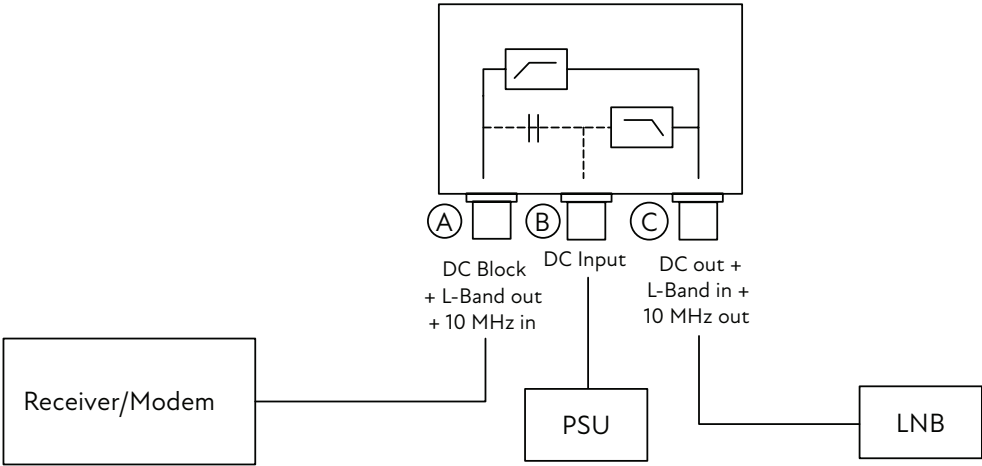
BiasTee DC inserter L-Band

Technical specifications

GENERAL	L-Band Frequency	950-2150 MHz
	DC input	+13 to +28 V
	Maximum load	1 A
	Insertion loss	1 dB @ 950-2150 MHz max.
	Return loss Input/Output	N- and SMA-connector: min. 10dB, typ 15 dB, with F connector min. 8dB, typ. 13 dB
	Group delay L-Band	± 1 ns max.
	Dimensions	96 x 28 x 89 mm (N connectors)
	Weight	209 g (F & SMA connectors), 249 g (N connectors)
	Temperature Range	Storage and operating: -40 to +80°C, -40 to +176°F
	MTBF	MTBF as per MIL-HDBK-217F Notice 2: Environmental Condition GF (Ground Fixed): >9000000 hours, Environmental Condition AIC (Airborne, Inhabited, Cargo): >45000000 hours, Quality level: Commercial, Temperature used for MTBF calculation: +35°C Ambient
INTERFACES	Ingress protection code	IP 67
	22 kHz bypass	Through receiver or external source, n/a with DC Block IN or OUT
	10 MHz bypass	Yes, standard
	Input connector (A)	SMA-type 50Ω female, N-type 50Ω female or F-type 75Ω female
	Output Connector (C)	SMA-type 50Ω female, N-type 50Ω female or F-type 75Ω female
	DC connector (B)	SMA-type 50Ω female, N-type 50Ω female, F-type 75Ω female or 2 m pigtail

BiasTee DC inserter L-Band

Installation example



Part number designation for the Bias Tee / DC Inserter

Model	Connector A		Sep. DC input B		Connector C		DC Block A	DC Block C	Future use	Future use	Version
LBIT	?		?		?		?	?	X	X	02
	0	F	X	No	0	F	X	No DC block			
	5	N	0	F	5	N					
	8	SMA	5	N	8	SMA		DC Block A or C			
			8	SMA			1				
			9	Pigtail							

Example: L-Band out + DC Block (N), DC input (Pigtail), DC out + L-Band in (N) = LBIT-595X-1XXX-02

C-BAND

X-BAND

KU-BAND

KA-BAND

Q/V-BAND

RFo FIBER

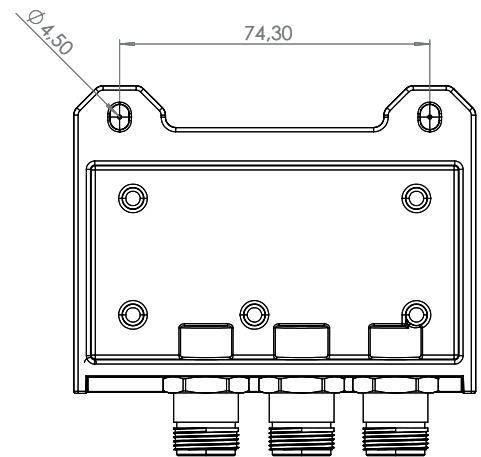
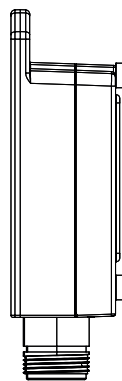
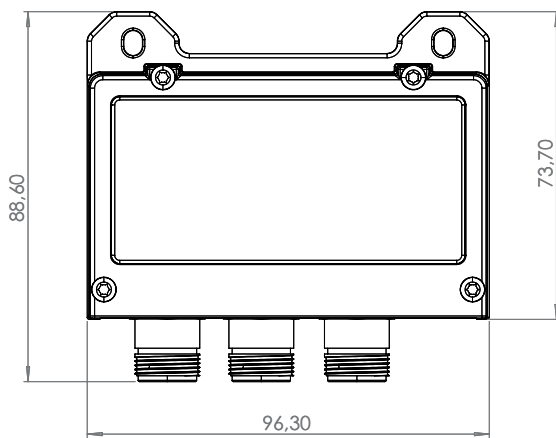
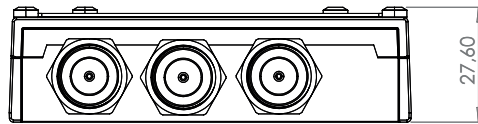
L-BAND

EXT REF

OTHER

BiasTee DC inserter L-Band

Technical Drawing



Professional Satcom Frequency Converters & Components. All products are fully CE and RoHS compliant and every unit includes full documentation of performance tests and quality control. Please contact sales@smw.se to configure or customize the unit to your needs. Visit smw.se or scan QR code to see our full product range and request a quote.

