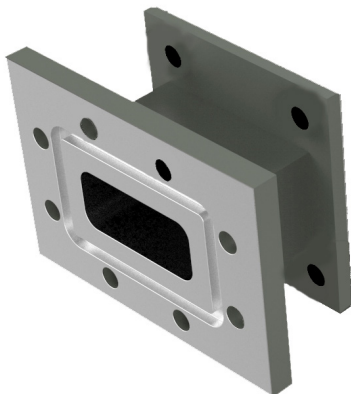


# CPR 112G adapter X-Band

## Key features



- Conversation WR112 to CPR112G
- Very low through loss
- Excellent VSWR
- Wide operating temperature range

### Description

The CPR 112G adapter is for use together with SMW X-Band LNBs when one need to change from PBR 84 (WR112) to CPR 112G input waveguide flange.



X-Band LNB with optional CPR 112G adapter



Explore our full  
product range  
in this category



# CPR 112G adapter X-Band

## Technical specifications

GENERAL	Frequency range	7.00-8.50 GHz
	Input VSWR	1.07:1 max.
	Output VSWR	1.07:1 max.
	Insertion loss	0.05 dB max.
	Waveguide	WR 112 / R84
	Input flange	CPR 112 G (O-ring groove, 4 x 4.3 mm holes)
	Output flanges	PBR 84 (4 x 4.2 mm holes)
	Weight	68 g
	Temperature Range	Storage and operating: -40 to +80°C, -40 to +176°F
	Material	Aluminium
	Miscellaneous	Enclosed conductive O-ring, mounting hexhead screws (M4 x 10 mm) 4 pcs.

C-BAND

X-BAND

KU-BAND

KA-BAND

Q/V-BAND

RFo FIBER

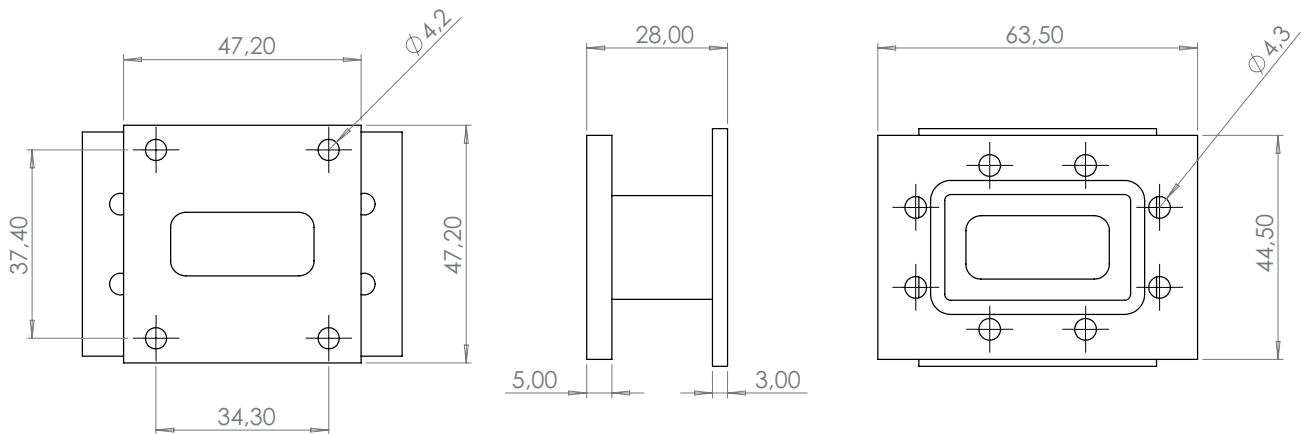
L-BAND

EXT REF

OTHER

# CPR 112G adapter X-Band

## Technical Drawing



Professional Satcom Frequency Converters & Components. All products are fully CE and RoHS compliant and every unit includes full documentation of performance tests and quality control. Please contact [sales@smw.se](mailto:sales@smw.se) to configure or customize the unit to your needs. Visit [smw.se](http://smw.se) or scan QR code to see our full product range and request a quote.

