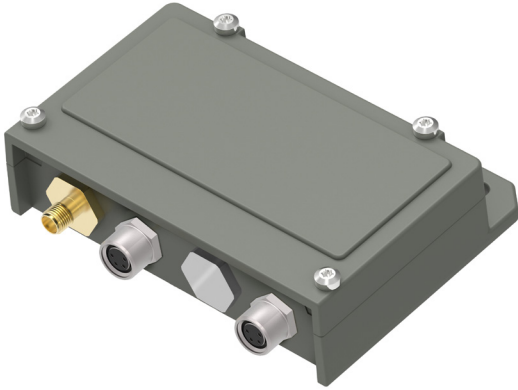


M8 Alarm Break Out

Key features



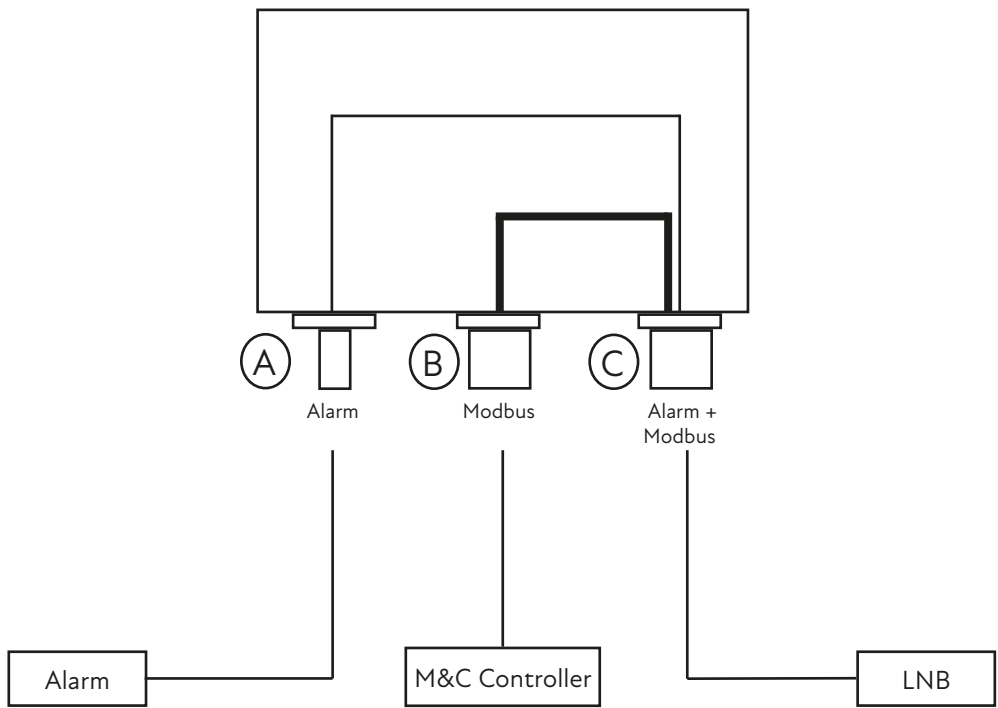
- Break out of alarm signal
- Outdoor rated (IP 67)
- Wide operating temperature range


Description

This device is used to break out the alarm signal from the M8 connector.

M8 Alarm Break Out

Technical Drawing



Explore our full product range in this category 

M8 Alarm Break Out

Technical specifications

GENERAL	Maximum load	Up to 200mA, 3.3 V to 24 V
	Dimensions	96 x 28 x 74 mm
	Weight	216 g
	Temperature Range	Storage and operating: -40 to +80°C, -40 to +176°F
	MTBF	MTBF as per MIL-HDBK-217F Notice 2: Environmental Condition GF (Ground Fixed): >9000000 hours, Environmental Condition AIC (Airborne, Inhabited, Cargo): >45000000 hours, Quality level: Commercial, Temperature used for MTBF calculation: +35°C Ambient
	Ingress protection code	IP 67
	Connector A	SMA-type 50Ω female
	Connector B	M8 4 pin, A coded female
	Connector C	M8 4 pin, A coded female