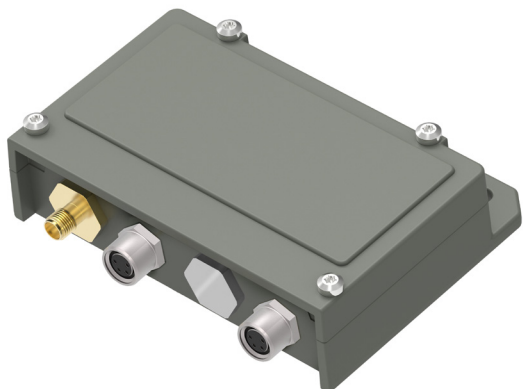


M8 DC input

Key features



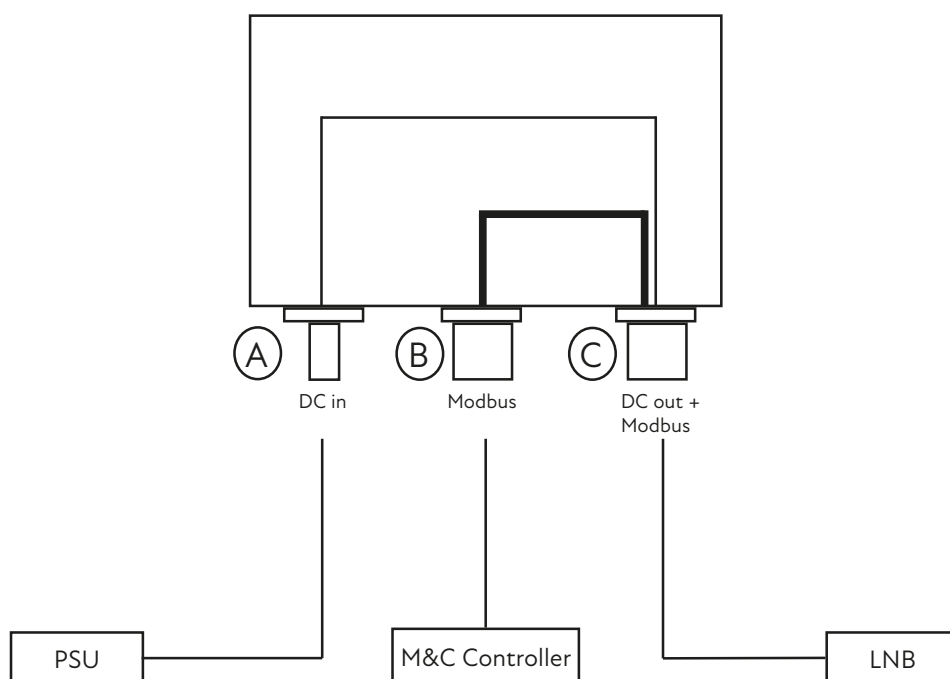
- M8 DC input
- Outdoor rated (IP 67)
- Wide operating temperature range

Description

This device is used to add DC input to the M8 connector.

M8 DC input

Technical Drawing



Explore our full
product range
in this category



M8 DC input

Technical specifications

GENERAL	DC input	< 28 V
	Maximum load	1 A
	Dimensions	96 x 28 x 74 mm
	Weight	216 g
	Temperature Range	Storage and operating: -40 to +80°C, -40 to +176°F
	MTBF	MTBF as per MIL-HDBK-217F Notice 2: Environmental Condition GF (Ground Fixed): >9000000 hours, Environmental Condition AIC (Airborne, Inhabited, Cargo): >45000000 hours, Quality level: Commercial, Temperature used for MTBF calculation: +35°C Ambient
	Ingress protection code	IP 67
	Connector A	SMA-type 50Ω female
	Connector B	M8 4 pin, A coded female
	Connector C	M8 4 pin, A coded female