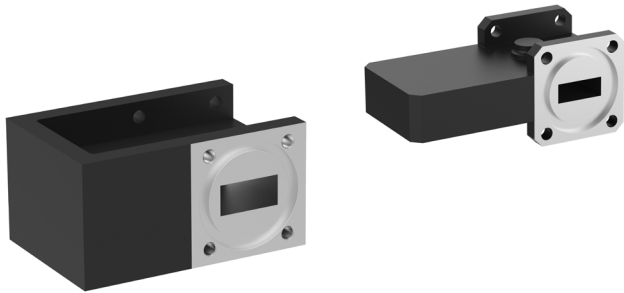
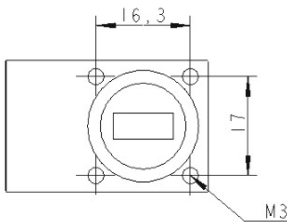


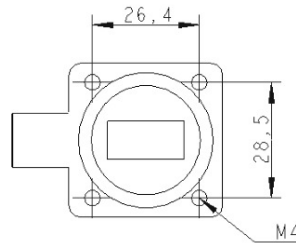
# Waveguide Isolators



Ka Band



Ku Band



## Description

Waveguide isolators for Ku-Band and Ka-Band. Our waveguide isolator/circulator transfers RF signals in only one direction on the waveguide with very low loss. This is very useful in cases where a very low input SWR is needed or to reduce reverse direction interfering signals.

All isolators are designed and tested to work seamlessly together with Swedish Microwave products. All isolators have high operating temperature range, are waterproof and corrosion resistant for use in outdoor environments.

## Features

- Waterproof and corrosion resistant
- Very low input SWR
- High temperature range

## Technical specifications

MODEL:	Ku-Band Isolator Low Loss, pn_595313	Ka-Band Isolator Low Loss, pn_595323-02
Frequency Range	10.70 - 12.75 GHz	17.30 - 22.30 GHz
Input / Output VSWR	1.20:1 max.	1.15:1 max.
Isolation Output / Input	20 dB min.	20 dB min.
Insertion Loss	0.15 dB max.	0.20 dB max.
Waveguide	R 120 / WR75	R 220 / WR42
Input Flange	PBR 120 (O-ring groove, 4x threaded M4 holes)	PBR 220 (O-ring groove, 4x threaded M3 holes)
Output Flange	UBR 120 (flat flange with 4x 4.2mm diameter holes)	UBR 220 (flat flange with 4x 3.2 mm diameter holes)
Input Power	15 W max.	5 W max.
Material	Aluminium	
Finish	MIL-DTL-5541F, TYPE II	
Temperature Range	Storage and operating: -40 to +80 °C	
Dimensions	74 x 49 x 38 mm	51 x 26 x 23 mm
Weight	60 g	40 g
Miscellaneous	Enclosed O-ring, mounting screws (M4 x 10) 4 pcs.	Enclosed O-ring, mounting screws (M3 x 8) 4 pcs.

