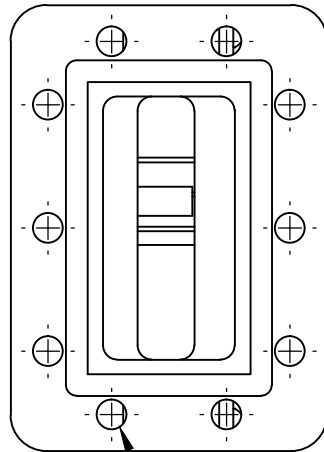


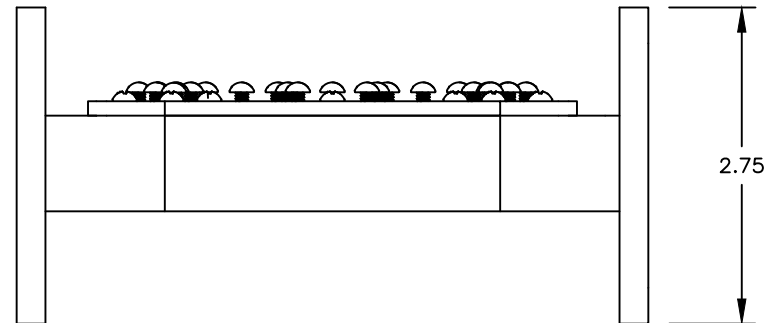
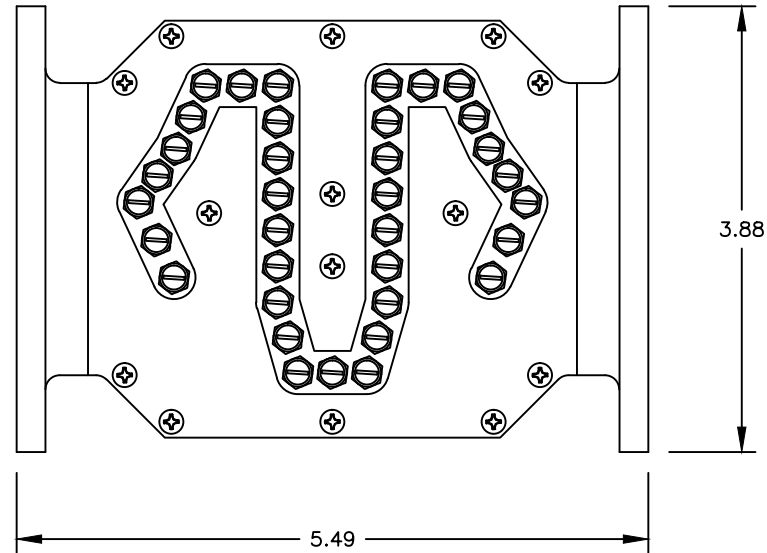
THIS DRAWING IS A SOURCE CONTROL DRAWING AND IS PROPRIETARY TO MICROWAVE FILTER CO., INC. AND
MAY NOT BE DUPLICATED OR DISTRIBUTED WITHOUT WRITTEN PERMISSION OF MICROWAVE FILTER CO., INC.
THIS DRAWING ALSO DESCRIBES TRADE SECRETS AND IS THE EXCLUSIVE PROPERTY OF MICROWAVE FILTER CO., INC

REVISION

LTR	ECN	DATE	APPR'D



.257 DIA THRU
(10) BOTH FLANGES



SPECIFICATIONS

PASSBAND:	3700-4200 MHz
INSERTION LOSS:	1.5 dB MAX; 0.5 dB MAX @ (Fo)
PASSBAND RETURN LOSS:	17 dB MIN
REJECTION:	60 dB MIN @ 3670 MHz & BELOW 30 dB MIN @ 4230 MHz
GROUP DELAY VARIATION:	3.0 nS WITHIN +/-0.5 MHz.
OPERATING TEMP RANGE:	-40 DEG C TO +60 DEG C
FLANGES:	CPR-229G (INPUT) CPR-229F (OUTPUT)
ENVIRONMENT:	OUTDOOR USE (IP67)

UNLESS SPECIFIED
ALL TOLERANCES \pm .030

ENVELOPE DRAWING

MFC MICROWAVE FILTER CO. INC. 6743 KINNE ST. E. SYRACUSE, N.Y. 13057		FSCM27834	
DATE	10/23	TITLE C-BAND FILTER	
DWN BY	PMB		
ENGINEER	J.S.	DRAWING NO.	REV
		21000C 3700-4200	A