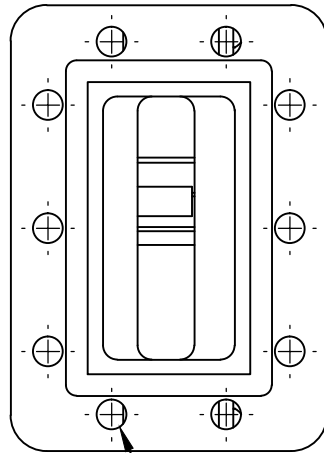


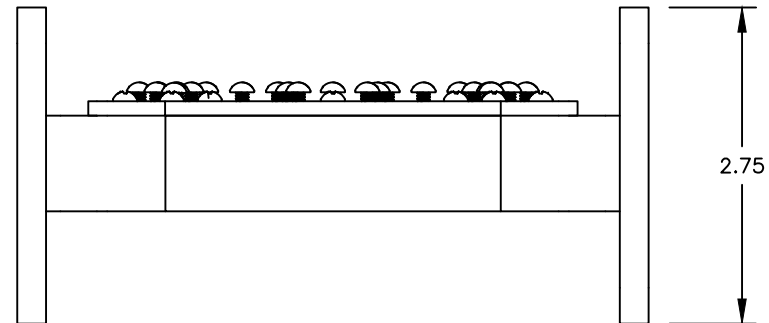
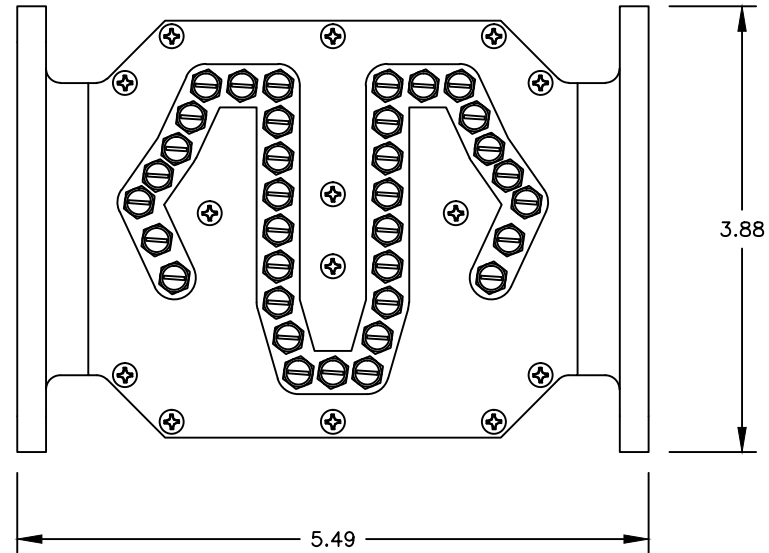
THIS DRAWING IS A SOURCE CONTROL DRAWING AND IS PROPRIETARY TO MICROWAVE FILTER CO., INC. AND
MAY NOT BE DUPLICATED OR DISTRIBUTED WITHOUT WRITTEN PERMISSION OF MICROWAVE FILTER CO., INC.
THIS DRAWING ALSO DESCRIBES TRADE SECRETS AND IS THE EXCLUSIVE PROPERTY OF MICROWAVE FILTER CO., INC

REVISION

LTR	ECN	DATE	APPR'D



.257 DIA THRU
(10) BOTH FLANGES



SPECIFICATIONS

PASSBAND:	3670-4200 MHz
INSERTION LOSS:	0.7 dB APPROX.
PASSBAND RETURN LOSS:	17 dB TYP
REJECTION:	60 dB Min From DC-3300 MHz
	45 dB Min From 3300-3600 MHz
	25 dB Min From 4250-4295 MHz
	30 dB Min from 4295-4400 MHz
	50 dB Min From 4400-4800 MHz
GROUP DELAY VARIATION:	8 nS MAX
OPERATING TEMP RANGE:	-40 DEG C TO +60 DEG C
FLANGES:	CPR-229G (INPUT) CPR-229F (OUTPUT)
ENVIRONMENT:	OUTDOOR USE

UNLESS SPECIFIED
ALL TOLERANCES \pm .030

ENVELOPE DRAWING

MFC MICROWAVE FILTER CO. INC. 6743 KINNE ST. E. SYRACUSE, N.Y. 13057		FSCM27834	
DATE	9/24	TITLE	
DWN BY	PMB	C-BAND FILTER	
ENGINEER	J.S.	DRAWING NO.	REV
		21000-3670/4200	-