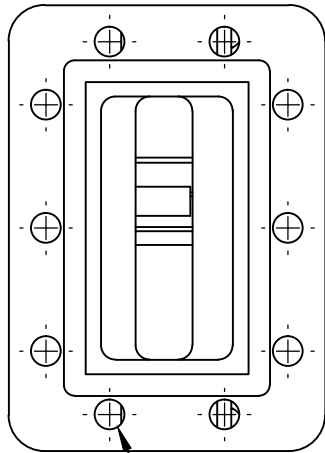
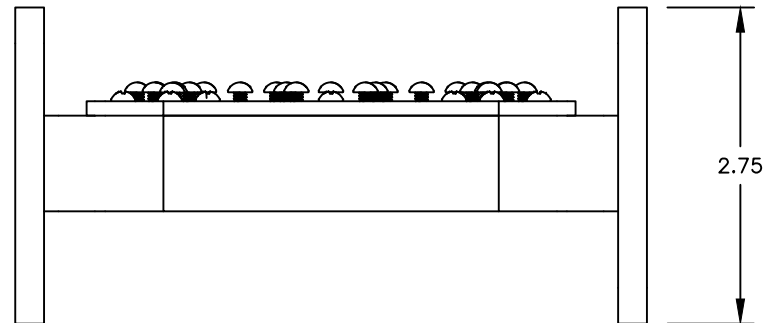
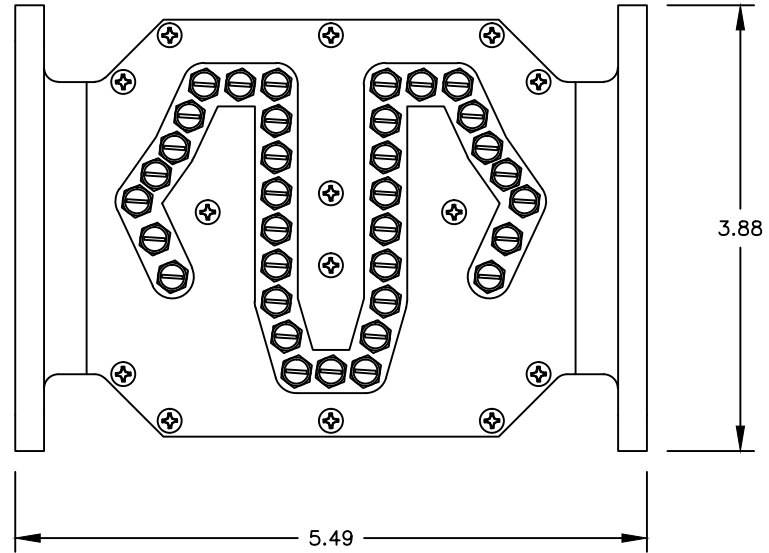


THIS DRAWING IS A SOURCE CONTROL DRAWING AND IS PROPRIETARY TO MICROWAVE FILTER CO., INC. AND MAY NOT BE DUPLICATED OR DISTRIBUTED WITHOUT WRITTEN PERMISSION OF MICROWAVE FILTER CO., INC. THIS DRAWING ALSO DESCRIBES TRADE SECRETS AND IS THE EXCLUSIVE PROPERTY OF MICROWAVE FILTER CO., INC

REVISION			
LTR	ECN	DATE	APPR'D



.257 DIA THRU
(10) BOTH FLANGES



SPECIFICATIONS

PASSBAND: 3800-4200 MHz
 INSERTION LOSS: 1.4 dB TYP
 PASSBAND V.S.W.R.: 1.44:1 MAX
 REJECTION: 70 dB MIN FROM 3300-3700 MHz
 60 dB MIN FROM 3700-3780 MHz
 30 dB MIN FROM 3780-3785 MHz
 GROUP DELAY VARIATION: <3.0 nS WITHIN +/-0.5 MHz.
 OPERATING TEMP RANGE: -30 DEG C TO +50 DEG C
 FLANGES: CPR-229G (INPUT) CPR-229F (OUTPUT)
 ENVIRONMENT: OUTDOOR USE (IP67)

UNLESS SPECIFIED
ALL TOLERANCES ±.030

ENVELOPE DRAWING

MFC MICROWAVE FILTER CO. INC. 6743 KINNE ST. E. SYRACUSE, N.Y. 13057		FSCM27834	
DATE	3/24	TITLE	
DWN BY	PMB	C-BAND FILTER	
ENGINEER	J.S.	DRAWING NO.	REV
		21000B 3800-4200	-