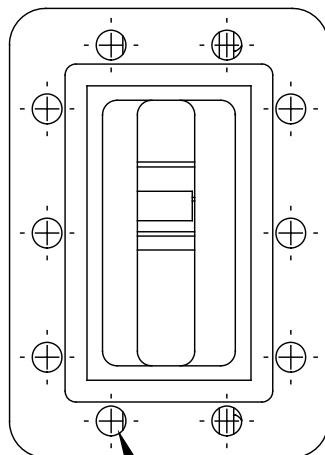
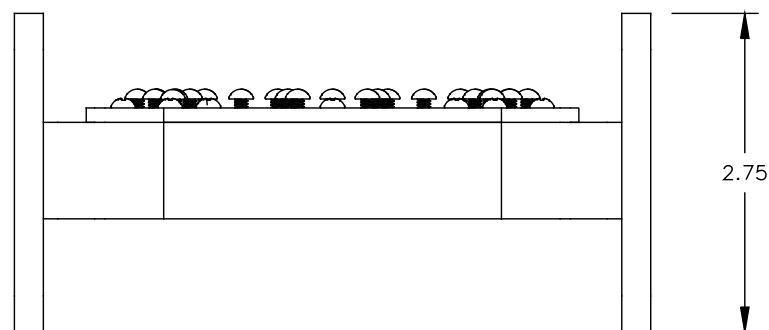
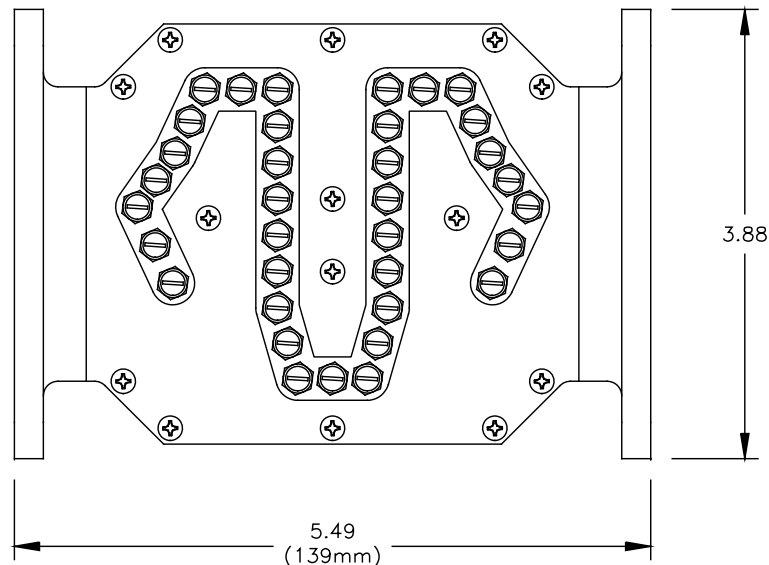


THIS DRAWING IS A SOURCE CONTROL DRAWING AND IS PROPRIETARY TO MICROWAVE FILTER CO., INC. AND  
MAY NOT BE DUPLICATED OR DISTRIBUTED WITHOUT WRITTEN PERMISSION OF MICROWAVE FILTER CO., INC.  
THIS DRAWING ALSO DESCRIBES TRADE SECRETS AND IS THE EXCLUSIVE PROPERTY OF MICROWAVE FILTER CO., INC

REVISION			
LTR	ECN	DATE	APPR'D



.257 DIA THRU  
(10) BOTH FLANGES



# SPECIFICATIONS

PASSBAND: 3900-4200 MHz  
 INSERTION LOSS: 1.5 dB MAX @ 3900 MHz  
 1.2 dB MAX @ 4200 MHz  
 1.0 dB MAX FROM 3915 TO 4195 MHz  
 RETURN LOSS: 15 dB MIN (1.43:1 VSWR)  
 REJECTION: 60 dB MIN FROM 3200 TO 3880 MHz  
 45 dB TYP @ 4230 MHz  
 45 dB MIN FROM 4300 TO 4700 MHz  
 GROUP DELAY VARIATION: 3.0 nSEC WITHIN  $\pm 0.5$  MHz  
 ENVIRONMENTAL: IP67  
 WEIGHT: 1.5 LBS (680 GRAMS)  
 FLANGES: CPR229G (INPUT)  
 CPR229F (OUTPUT)  
 HALF GASKET SUPPLIED WITH EACH UNIT

UNLESS SPECIFIED  
ALL TOLERANCES  $\pm .030$

## ENVELOPE DRAWING

<b>MFC</b> MICROWAVE FILTER CO. INC. 6743 KINNE ST. E. SYRACUSE, N.Y. 13057		FSCM27834	
DATE	6/24	TITLE C-BAND FILTER	
DWN BY	PMB		
ENGINEER	J.S.	DRAWING NO.	REV
		21000-3900/4200	A