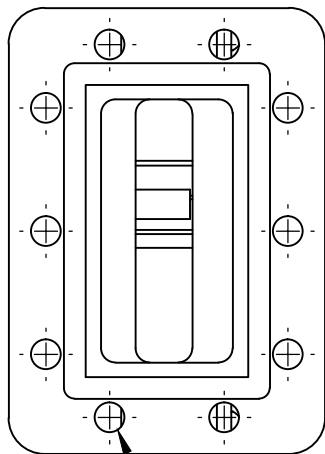
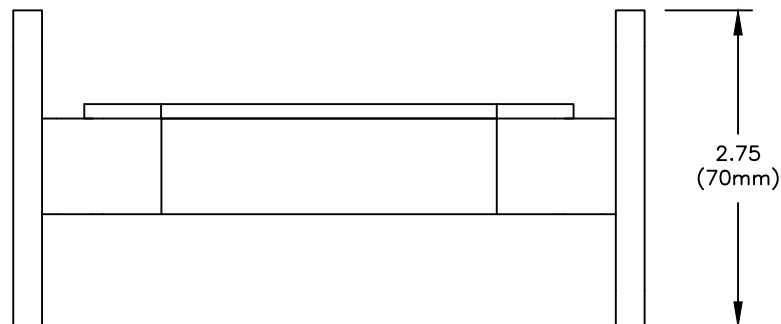
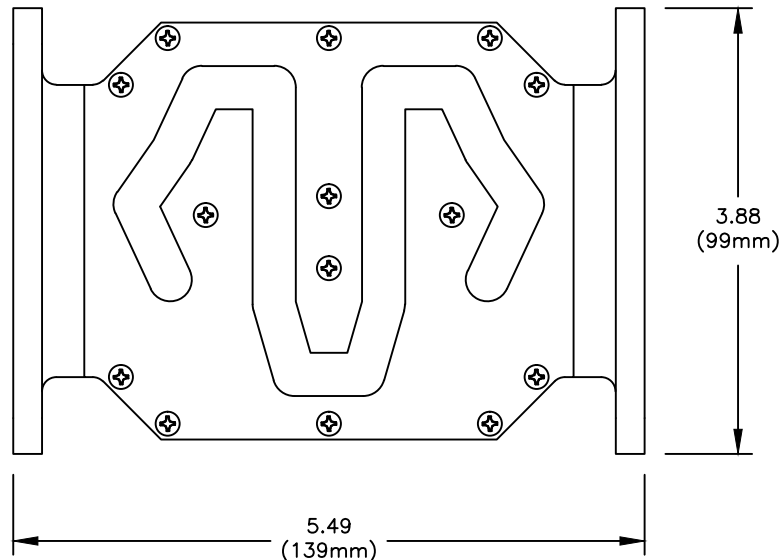


THIS DRAWING IS A SOURCE CONTROL DRAWING AND IS PROPRIETARY TO MICROWAVE FILTER CO., INC. AND MAY NOT BE DUPLICATED OR DISTRIBUTED WITHOUT WRITTEN PERMISSION OF MICROWAVE FILTER CO., INC. THIS DRAWING ALSO DESCRIBES TRADE SECRETS AND IS THE EXCLUSIVE PROPERTY OF MICROWAVE FILTER CO., INC

REVISION			
LTR	ECN	DATE	APPR'D



.257 DIA THRU  
(10) BOTH FLANGES



SPECIFICATIONS

PASSBAND: 4000-4200 MHz  
 INSERTION LOSS: 1.4 dB MAX @ 4000 MHz  
 1.0 dB MAX @ 4200 MHz  
 RETURN LOSS: 20 dB MIN (1.22:1 MAX)  
 GROUP DELAY VARIATION:  
 WITHIN ±0.5 MHz 1.45 nSEC MAX  
 REJECTION: 70 dB MIN FROM 3700 MHz TO 3900 MHz  
 60 dB MIN FROM 3900 MHz TO 3980 MHz  
 50 dB MIN @ 3983 MHz  
 30 dB MIN FROM 3980 MHz TO 3985 MHz  
 25 dB MIN, >30 dB TYP FROM 4230 TO 4250 MHz  
 80 dB MIN FROM 4400 MHz TO 7075 MHz  
 OPERATING TEMPERATURE: -40°C TO +60°C  
 FLANGES: CPR-229G (INPUT) CPR-229F (OUTPUT)  
 ENVIRONMENT: IP67 OUTDOOR USE  
 WEIGHT: 1.4 LBS (635 GRAMS)

UNLESS SPECIFIED  
ALL TOLERANCES ±.030

ENVELOPE DRAWING

<b>MFC</b> MICROWAVE FILTER CO. INC. 6743 KINNE ST. E. SYRACUSE, N.Y. 13057	FSCM27834	
	DATE 4/23	TITLE
DWN BY PMB	C-BAND FILTER (BLUE)	
ENGINEER J.S.	DRAWING NO. 21000-4000/4200	REV B