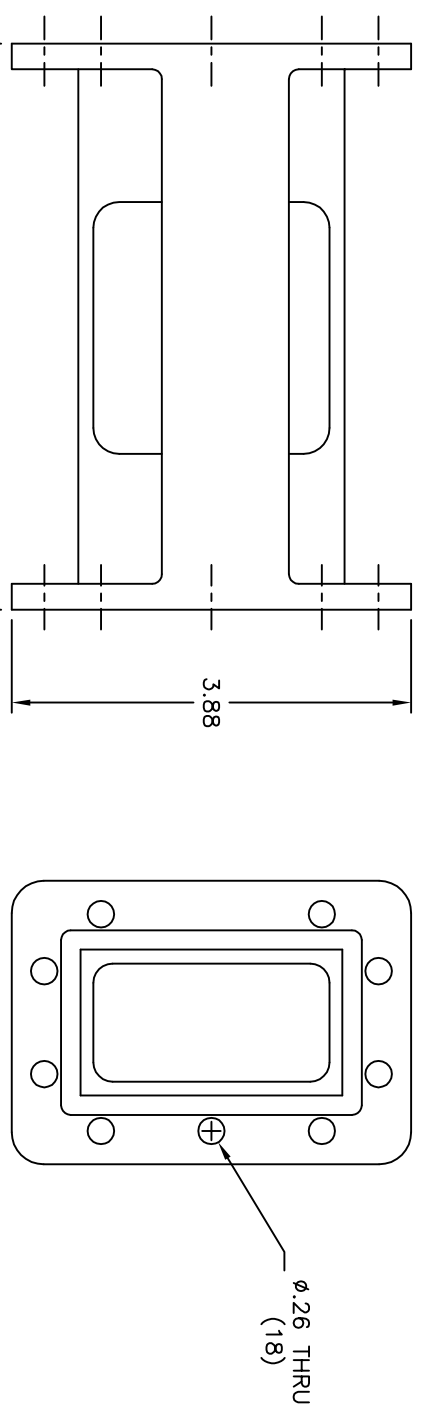


THIS DRAWING IS A SOURCE CONTROL DRAWING AND IS PROPRIETARY TO MICROWAVE FILTER CO., INC. AND MAY NOT BE DUPLICATED OR DISTRIBUTED WITHOUT WRITTEN PERMISSION OF MICROWAVE FILTER CO., INC. THIS DRAWING ALSO DESCRIBES TRADE SECRETS AND IS THE EXCLUSIVE PROPERTY OF MICROWAVE FILTER CO., INC.

REVISION		
LTR	ECN	DATE



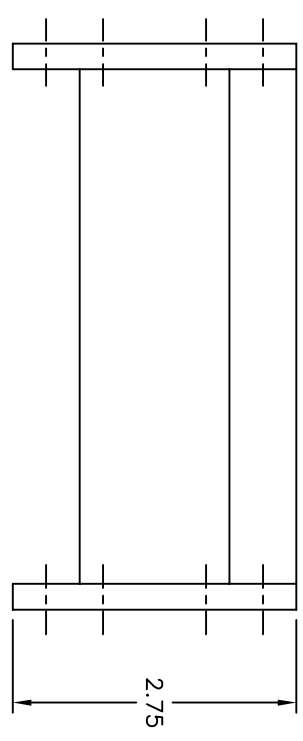
SPECIFICATIONS

PASSBAND: 3680-4180 MHz
 INSERTION LOSS: 0.5 DB APPROX. @ F₀
 VSWR: 0.5 DB APPROX. ROLL OFF @ BAND EDGES
 GROUP DELAY VARIATION: 1.44:1 TYP
 REJECTION: 8 nS MAX

REJECTION	FREQUENCY
45 DB MIN	3630, 4230 MHz
60 DB TYP	3530, 4330 MHz
70 DB TYP	3480, 4380 MHz
80 DB TYP	5825-7250 MHz
50 DB TYP	7250-7750 MHz

FLANGES: CPR229G (INPUT)
 CPR229F (OUTPUT)
 HALF GASKET SUPPLIED WITH EACH UNIT
 WEIGHT: 1.125 lbs APPROX.

ENVELOPE DRAWING



UNLESS SPECIFIED
 ALL TOLERANCES ±.060



FSCM27834

DATE 12/23/13	TITLE BANDPASS FILTER
DWN BY MW	DRAWING NO. 13961W-3680/4180
ENGINEER B.P.	REV -