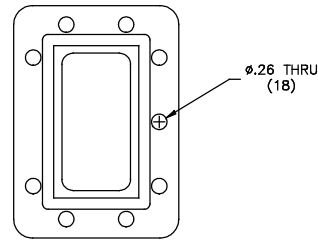
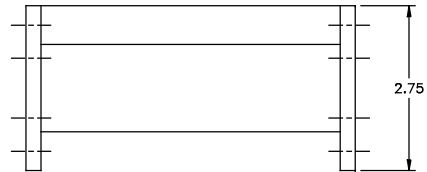
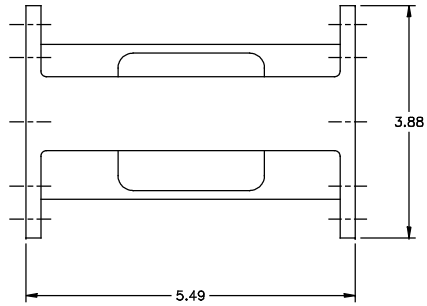


THIS DRAWING IS A SOURCE CONTROL DRAWING AND IS PROPRIETARY TO MICROWAVE FILTER CO., INC. AND
MAY NOT BE DUPLICATED OR DISTRIBUTED WITHOUT WRITTEN PERMISSION OF MICROWAVE FILTER CO., INC.
THIS DRAWING ALSO DESCRIBES TRADE SECRETS AND IS THE EXCLUSIVE PROPERTY OF MICROWAVE FILTER CO., INC

REVISION		
LTR	EQN	DATE



SPECIFICATIONS

PASSBAND: 3780-4200 MHz
INSERTION LOSS: 0.5 dB APPROX. @ F_0
0.5 dB APPROX. ROLL OFF @ BAND EDGES
VSWR: 1.44:1 TYP
GROUP DELAY VARIATION: 8 nS MAX

REJECTION	FREQUENCY
25 dB MIN	3730, 4300 MHz
50 dB TYP	3640, 4390 MHz
70 dB TYP	3570, 4470 MHz
80 dB TYP	5825-7250 MHz
50 dB TYP	7250-7750 MHz

FLANGES: CPR229G (INPUT)
CPR229F (OUTPUT)
HALF GASKET SUPPLIED WITH EACH UNIT
WEIGHT: 1.125 lbs APPROX.

ENVELOPE DRAWING

UNLESS SPECIFIED
ALL TOLERANCES $\pm.060$

MFC MICROWAVE FILTER CO. INC. E. SHARON, N.Y. 11737		FSCM27834	
DATE	1/3/14	TITLE	
DWN BY	MW	BANDPASS FILTER	
ENGINEER	B.P.	DRAWING NO.	REV
		13961W-3780/4200	-