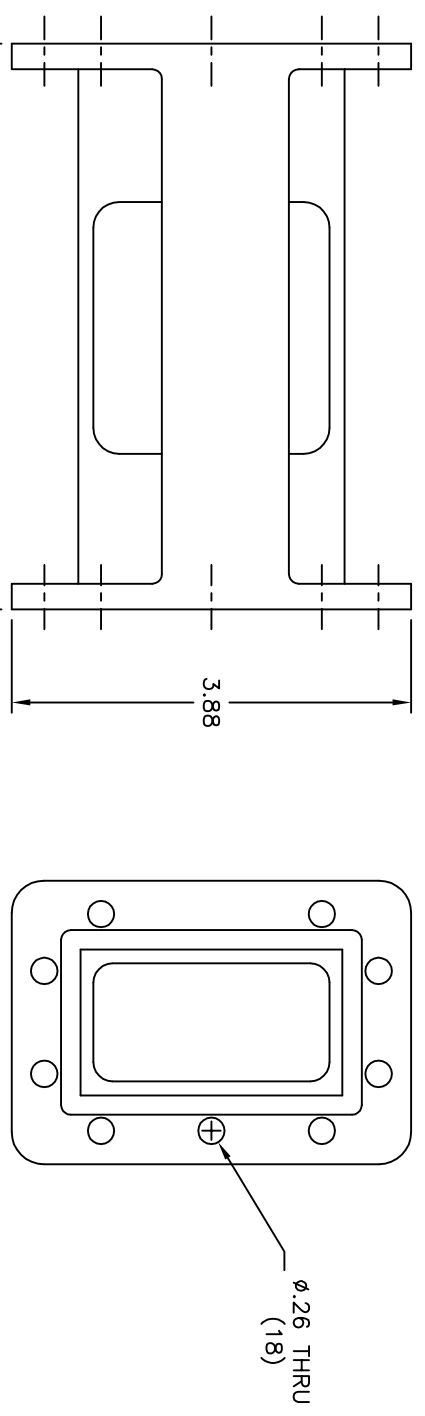


THIS DRAWING IS A SOURCE CONTROL DRAWING AND IS PROPRIETARY TO MICROWAVE FILTER CO., INC. AND MAY NOT BE DUPLICATED OR DISTRIBUTED WITHOUT WRITTEN PERMISSION OF MICROWAVE FILTER CO., INC. THIS DRAWING ALSO DESCRIBES TRADE SECRETS AND IS THE EXCLUSIVE PROPERTY OF MICROWAVE FILTER CO., INC.

REVISION		
LTR	ECN	DATE

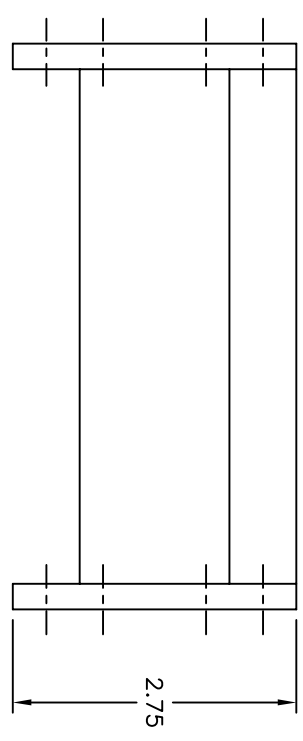


SPECIFICATIONS

PASSBAND: 3760-4200 MHz
 INSERTION LOSS: 0.3 DB APPROX. @ F_o
 0.3 DB APPROX. ROLL OFF @ BAND EDGES
 VSWR: 1.44:1 TYP
 GROUP DELAY VARIATION: 8 nS MAX

REJECTION	FREQUENCY
45 DB MIN	3710, 4320 MHz
60 DB TYP	3610, 4430 MHz
70 DB TYP	3570, 4470 MHz
80 DB TYP	5825-7250 MHz
50 DB TYP	7250-7750 MHz

FLANGES: CPR229G (INPUT)
 CPR229F (OUTPUT)
 HALF GASKET SUPPLIED WITH EACH UNIT
 WEIGHT: 1.125 lbs APPROX.



ENVELOPE DRAWING



FSCM27834

UNLESS SPECIFIED
 ALL TOLERANCES ±.060

DATE	12/30/13	TITLE	BANDPASS FILTER
DWN BY	MW	DRAWING NO.	13961WE-3760/4200
ENGINEER	B.P.	REV	-