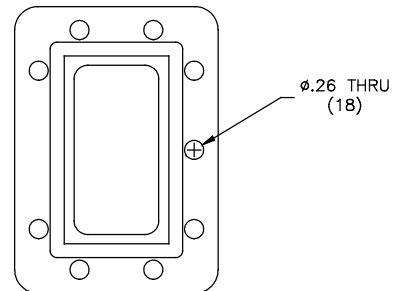
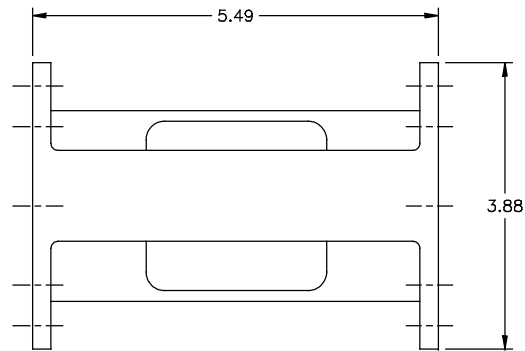


THIS DRAWING IS A SOURCE CONTROL DRAWING AND IS PROPRIETARY TO MICROWAVE FILTER CO., INC. AND
MAY NOT BE DUPLICATED OR DISTRIBUTED WITHOUT WRITTEN PERMISSION OF MICROWAVE FILTER CO., INC.
THIS DRAWING ALSO DESCRIBES TRADE SECRETS AND IS THE EXCLUSIVE PROPERTY OF MICROWAVE FILTER CO., INC

REVISION			
LTR	ECN	DATE	APPR'D
A	4331	7/12	PMB

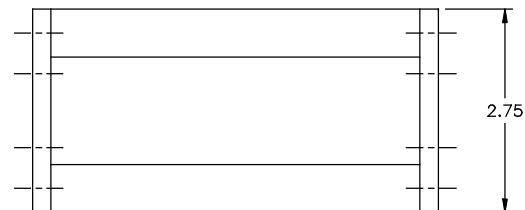


SPECIFICATIONS

PASSBAND: 3.6 TO 4.2 GHz
 INSERTION LOSS: 0.4 dB APPROX. @ F_o
 0.3 dB APPROX. ROLL OFF @ BAND EDGES
 VSWR: 1.5:1 TYP
 GROUP DELAY VARIATION: 8 nS MAX

REJECTION	FREQUENCY
45 dB MIN	3.55, 4.25 GHz
55 dB TYP	3.45, 4.35 GHz
70 dB TYP	3.40, 4.40 GHz

FLANGES: CPR229G (INPUT)
 CPR229F (OUTPUT)
 HALF GASKET SUPPLIED WITH EACH UNIT
 WEIGHT: 1.125 lbs APPROX.



ENVELOPE DRAWING

UNLESS SPECIFIED
ALL TOLERANCES ± 0.060

MFC MICROWAVE FILTER CO. INC. 6749 KINGS ST. E. SYRACUSE, N.Y. 13657		FSCM27834	
DATE	3/12	TITLE	
DWN BY	PMB	BANDPASS FILTER	
ENGINEER	B.P.	DRAWING NO.	13961WE-I
		REV	A