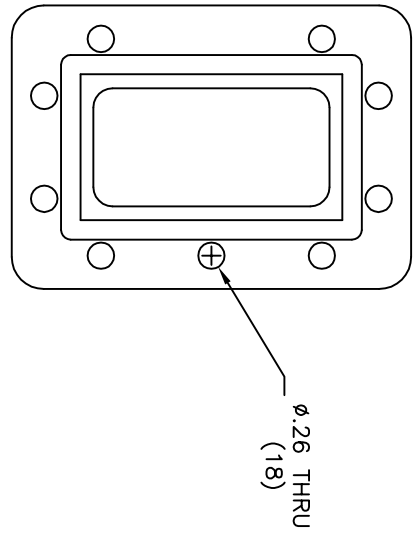
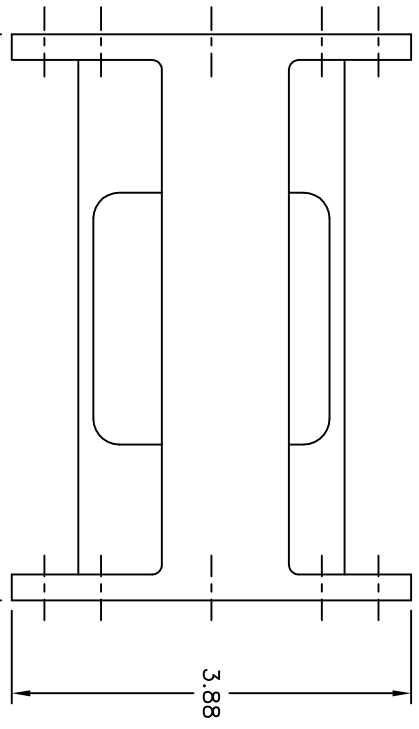


THIS DRAWING IS A SOURCE CONTROL DRAWING AND IS PROPRIETARY TO MICROWAVE FILTER CO., INC. AND MAY NOT BE DUPLICATED OR DISTRIBUTED WITHOUT WRITTEN PERMISSION OF MICROWAVE FILTER CO., INC. THIS DRAWING ALSO DESCRIBES TRADE SECRETS AND IS THE EXCLUSIVE PROPERTY OF MICROWAVE FILTER CO., INC.

REVISION			
LTR	ECN	DATE	APP'D
-	4951	2/20/18	MW



SPECIFICATIONS

PASSBAND: 3550-4150 MHZ
 INSERTION LOSS: 0.3 DB APPROX. @ F₀
 0.3 DB APPROX. ROLL OFF @ BAND EDGES
 VSWR: 1.44:1 TYP

REJECTION	FREQUENCY
45 DB MIN	3500, 4200 MHZ
55 DB TYP	3400, 4300 MHZ
70 DB TYP	3350, 4350 MHZ
80 DB TYP	5825-7250 MHZ
50 DB TYP	7250-7750 MHZ

FLANGES: CPR229G (INPUT)
 CPR229F (OUTPUT)
 HALF GASKET SUPPLIED WITH EACH UNIT
 WEIGHT: 1.125 lbs APPROX.

ENVELOPE DRAWING



FSCM27834

DATE	TITLE
2/20/18	BANDPASS FILTER

ENGINEER	DRAWING NO.	REV
B.P.	13961WE-1-3550/4150	-

UNLESS SPECIFIED
 ALL TOLERANCES ±.060