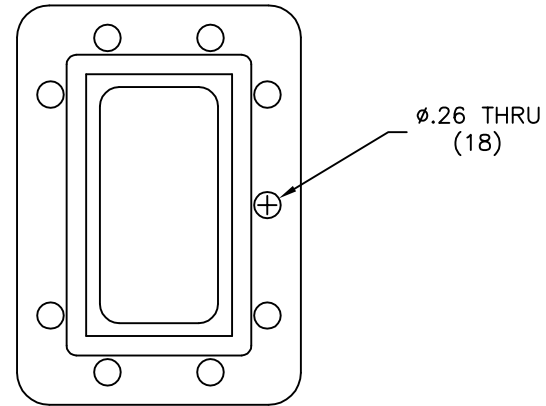
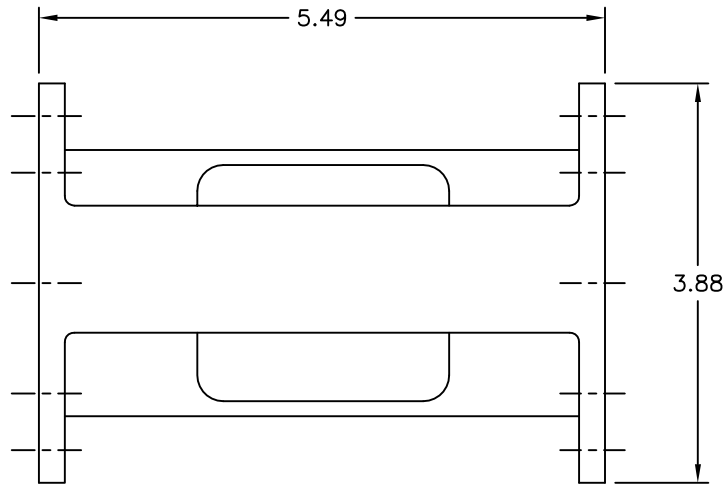


THIS DRAWING IS A SOURCE CONTROL DRAWING AND IS PROPRIETARY TO MICROWAVE FILTER CO., INC. AND  
MAY NOT BE DUPLICATED OR DISTRIBUTED WITHOUT WRITTEN PERMISSION OF MICROWAVE FILTER CO., INC.  
THIS DRAWING ALSO DESCRIBES TRADE SECRETS AND IS THE EXCLUSIVE PROPERTY OF MICROWAVE FILTER CO., INC

# REVISION

LTR	ECN	DATE	APPR'D
-----	-----	------	--------

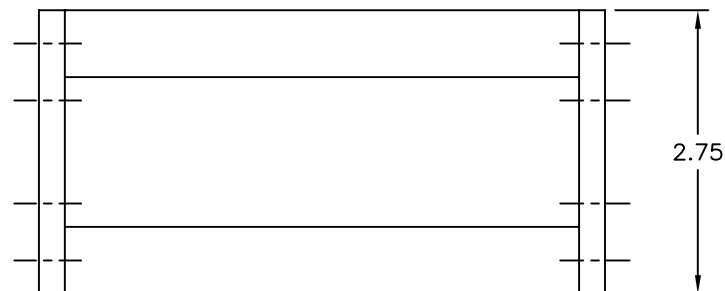


## SPECIFICATIONS

PASSBAND: 3.7 TO 4.2 GHz  
 INSERTION LOSS: 0.5 dB APPROX. @ F<sub>o</sub>  
 0.5 dB APPROX. ROLL OFF @ BAND EDGES  
 VSWR: 1.44:1 TYP, 1.5:1 MAX  
 GROUP DELAY VARIATION: 7 nS MAX


REJECTION	FREQUENCY
45 dB MIN	3.65, 4.25 GHz
60 dB TYP	3.55, 4.35 GHz
70 dB TYP	3.50, 4.40 GHz

FLANGES: CPR229G (INPUT)  
 CPR229F (OUTPUT)  
 HALF GASKET SUPPLIED WITH EACH UNIT  
 WEIGHT: 1.125 lbs APPROX.



## ENVELOPE DRAWING

UNLESS SPECIFIED  
ALL TOLERANCES ±.060

		MICROWAVE FILTER CO. INC. 6743 KINNE ST. E. SYRACUSE, N.Y. 13057		FSCM27834	
DATE 9/22/11		TITLE BANDPASS FILTER			
DWN BY MW					
ENGINEER B.P.		DRAWING NO. 13961W			REV —