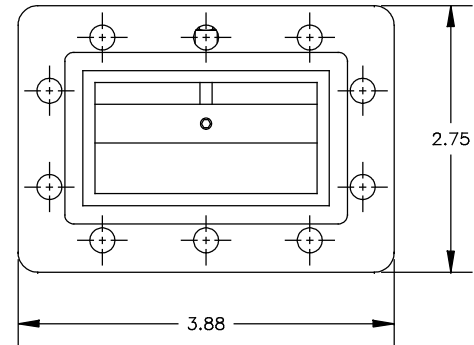
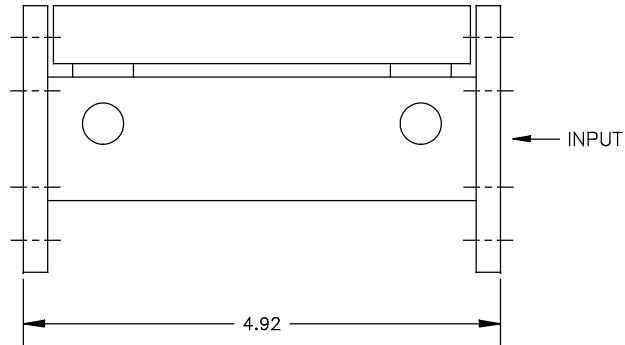


THIS DRAWING IS A SOURCE CONTROL DRAWING AND IS PROPRIETARY TO MICROWAVE FILTER CO., INC. AND
MAY NOT BE DUPLICATED OR DISTRIBUTED WITHOUT WRITTEN PERMISSION OF MICROWAVE FILTER CO., INC.
THIS DRAWING ALSO DESCRIBES TRADE SECRETS AND IS THE EXCLUSIVE PROPERTY OF MICROWAVE FILTER CO., INC

REVISION		
LTR	ECN	DATE
APPR'D		



SPECIFICATIONS

PASSBAND: 3.40 — 4.20 GHz.
 PASSBAND INSERTION LOSS: 1.0 dB MAX
 PASSBAND RETURN LOSS: 17.0 dB MIN.
 REJECTION: 25 dB MIN. @ 3.3 & 4.3 GHz
 FLANGES: CPR-229 W/SUPPLIED HALF GASKET/
 GROOVED FLANGE (INPUT SIDE)
 FLAT FLANGE (OUTPUT SIDE)

UNLESS SPECIFIED
 ALL TOLERANCES ± 0.030

ENVELOPE DRAWING

MFC MICROWAVE FILTER CO. INC. 6749 KINGS ST. E. SYRACUSE, N.Y. 13207		FSCM27834	
DATE	2/08	TITLE	
DWN BY	PMB	BANDPASS FILTER	
ENGINEER	E.L.	DRAWING NO.	REV
		7894D-3400/4200	C