

8 7 6 5 4 3 2 1

SPECIFICATIONS

FREQUENCY BAND Rx: 3.625 - 4.200 GHz
Tx: 5.850 - 6.425 GHz

INSERTION LOSS Rx: 0.30 dB MAX
Tx: 0.20 dB MAX

VSWR Rx: 1.30:1 MAX
Tx: 1.30:1 MAX

ISOLATION : 70 dB MIN (Linear Version)
: 60 dB MIN (CP Version)

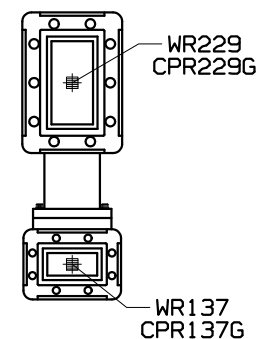
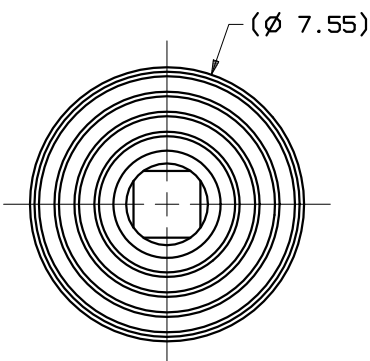
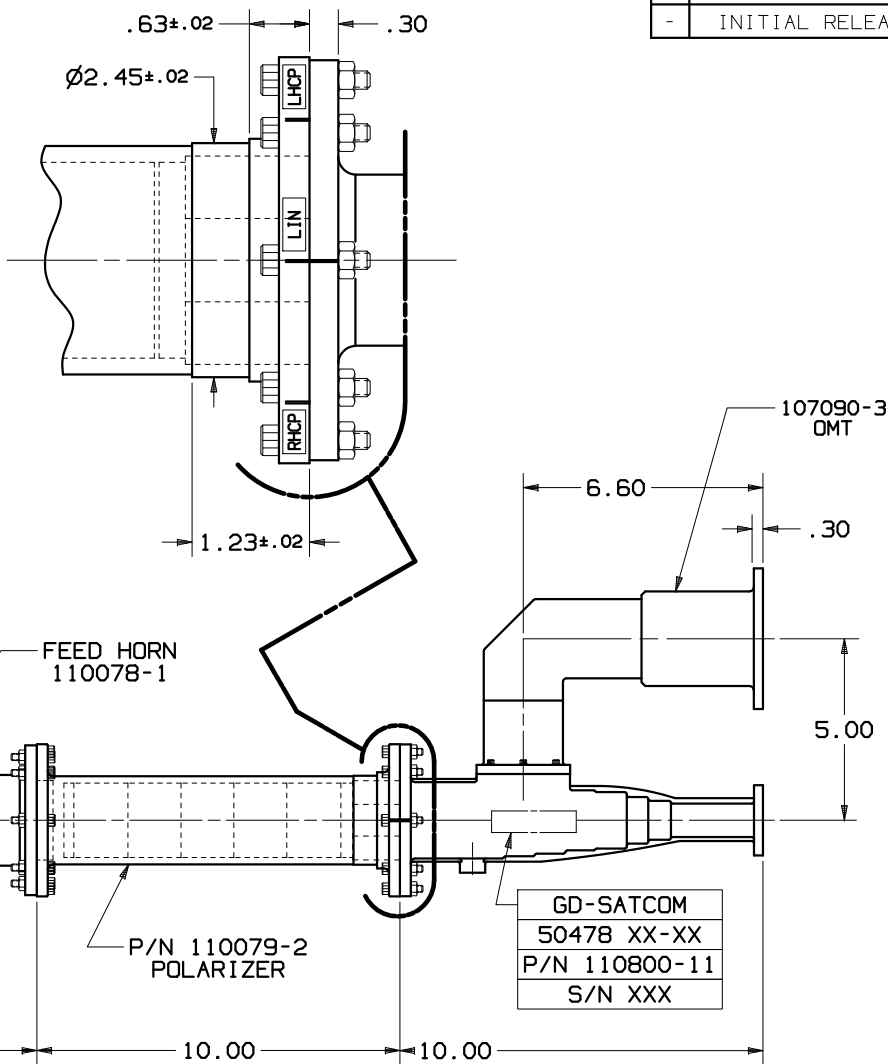
AXIAL RATIO
(CP Version) Rx: 1.41 (3.0 dB)
Tx: 1.30 (2.3 dB)

POWER HANDLING : 5 KW CW

PRESSURIZATION : SEALED TO 2.0 PSIG

FINISH: INTERIOR
AND FLANGE FACES: CHEM FILMED PER
MIL-C-5541C, CLASS 1A
EXTERIOR: WHITE PAINT, COLOR No. 17875
PER FED-STD-595

REVISIONS			
REV	DESCRIPTION	DATE	APPROVED
-	INITIAL RELEASE	03-19-03	



GD-SATCOM
50478 XX-XX
P/N 110800-11
S/N XXX

1. ELECTRICAL SPECIFICATIONS: TESTED PER TP 110800
NOTES: UNLESS OTHERWISE SPECIFIED.

UNLESS OTHERWISE SPECIFIED INTERPRET DIMENSIONING & TOLERANCING PER ANSI Y14.5M-1982. DIMENSIONS ARE IN INCHES. DIMENSIONS SHOWN IN () ARE FOR REFERENCE ONLY. TOLERANCES ARE: SURFACE- TOLERANCES- .XX ±.01 .XXX ±.002 .XXXX ±.0010 ANGLES ±0°30' MATERIAL:	APPROVALS DRAWN: L. TOVALIN CHECKED: H. SPIELEDER ENGR: MFG: QA:	DATE 09-12-94 09-12-94	GENERAL DYNAMICS PROPRIETARY GENERAL DYNAMICS SATCOM Technologies 3111 Fujita St., Torrance, CA 90505, (310) 539-6704	
	EAR CONTROLLED: Export or re-export subject to 15 CFR 700-799.		C-BAND 2-PORT Rx/Tx FEED, CP-1.30AR	
	SIZE: C FSCM No.: 50478 SCALE: X:X		DWG No.: 110800-11 REV: - SHEET: 1	

8 7 6 5 4 3 2 1