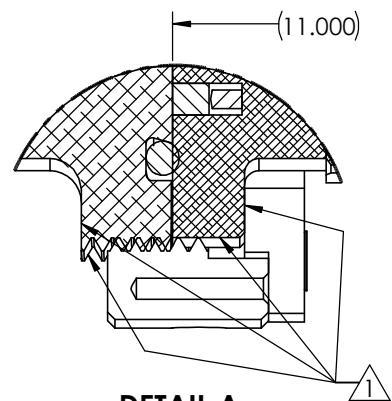
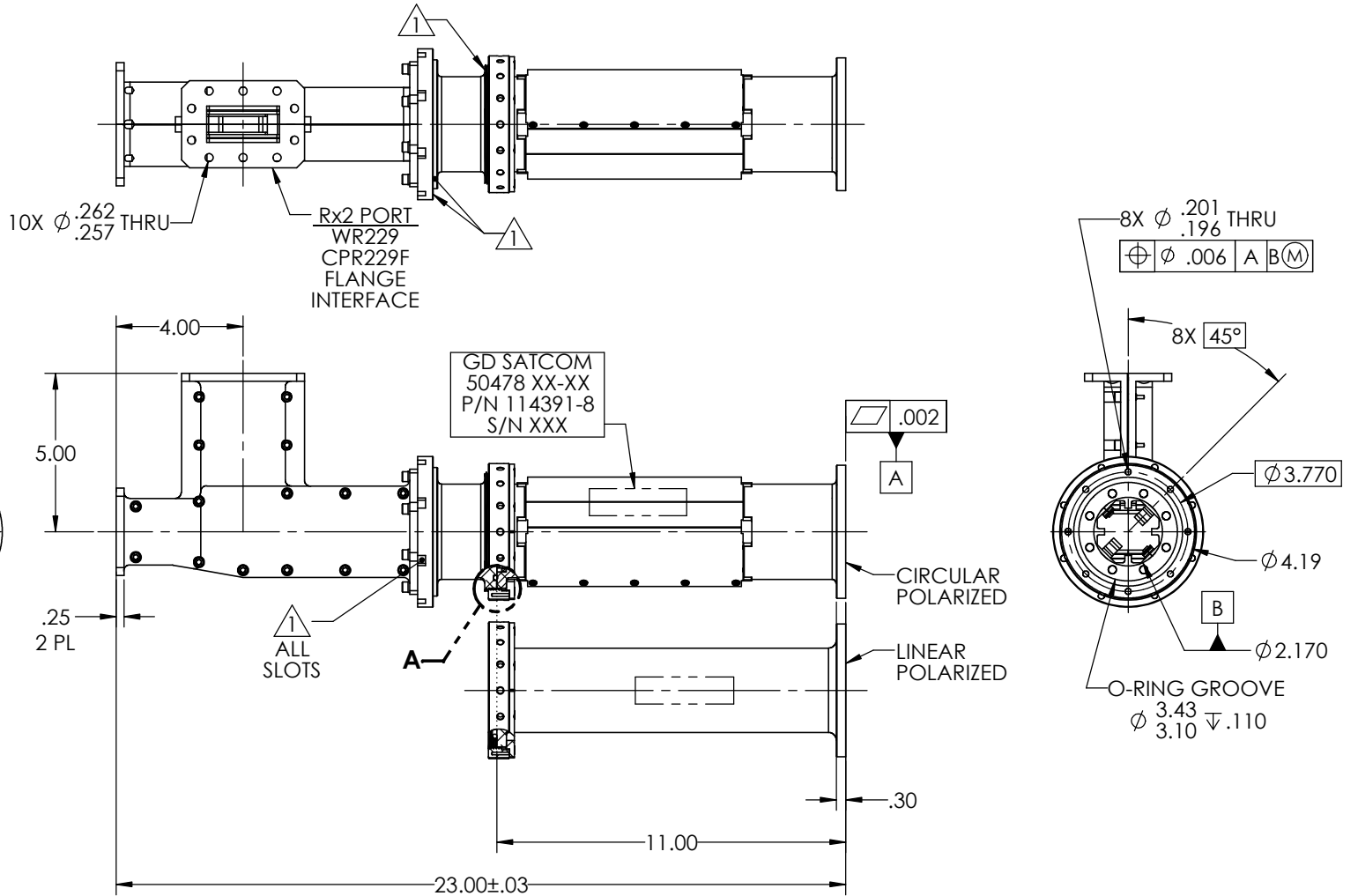


SPECIFICATIONS

FREQUENCY BAND : 3.400 - 4.200 GHz
INSERTION LOSS : 0.25 dB MAX
VSWR : 1.25:1
ISOLATION : 20 dB MIN
AXIAL RATIO : 0.50 dB MAX

PRESSURIZATION : SEALED TO 1.0 PSIG
FINISH
 FLANGE FACES : CHROMATE CONVERSION COATED
 (PER MIL-DTL-5541F, TYPE II, CLASS 1A)
 EXTERIOR : WHITE PAINT, COLOR № 17875
 PER FED-STD-595
 1 SURFACES FREE OF PRIMER AND PAINT

REVISIONS				
ZONE	REV.	DESCRIPTION	DATE	APPROVED
	A	SEE CN № 13246	2014/11/14	N. Huffman

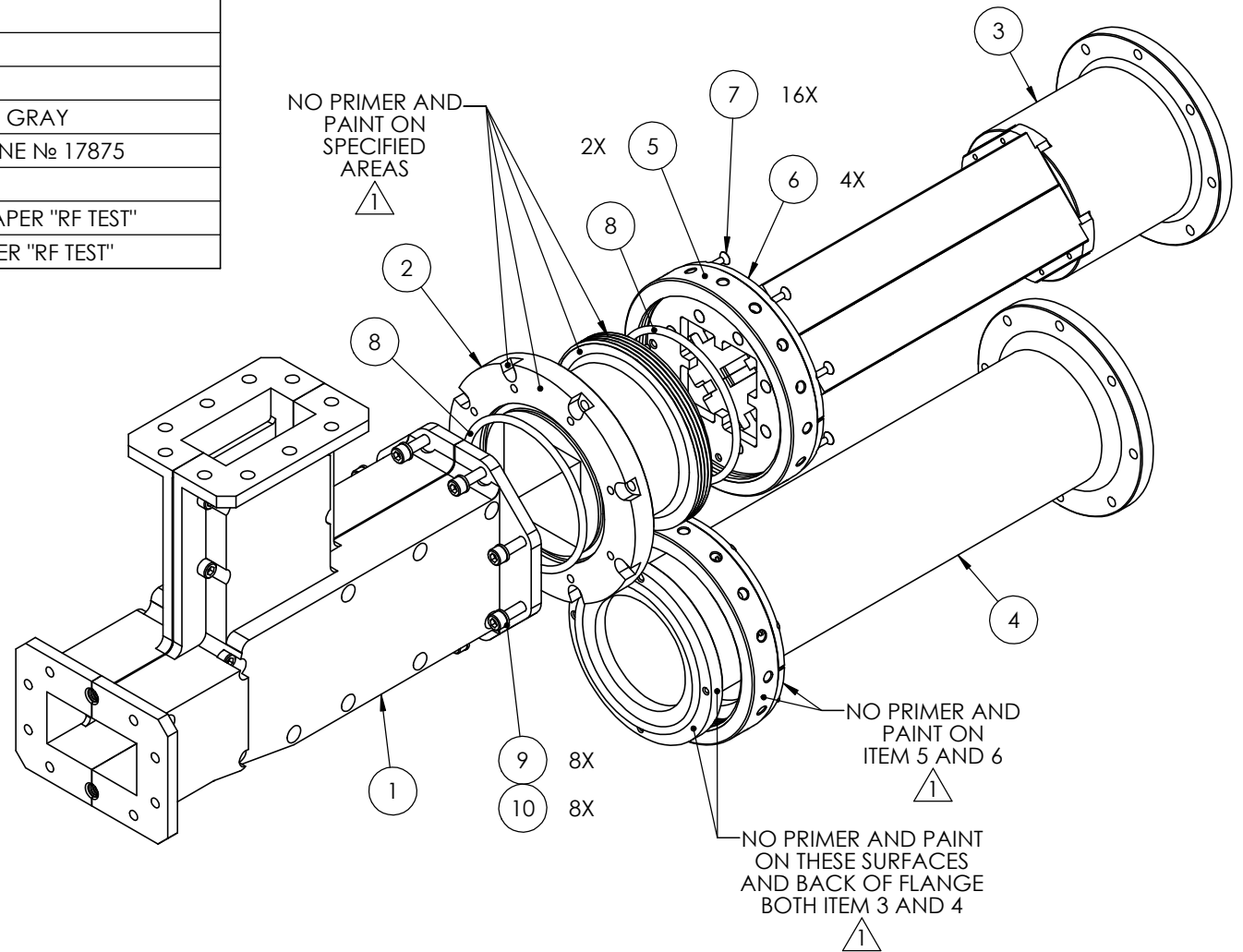


DETAIL A
SCALE 5 : 2

NOTES: UNLESS OTHERWISE SPECIFIED.

DO NOT SCALE DRAWINGS		APPROVALS	DATE	GENERAL DYNAMICS PROPRIETARY	
UNLESS OTHERWISE SPECIFIED, INTERPRET DIMENSIONING & TOLERANCING PER ANSI/ASME Y14.5M-2009. DIMENSIONS ARE IN INCHES. DIMENSIONS SHOWN IN () ARE FOR REFERENCE ONLY.		DRAWN: H. Lim	14-11-21	GENERAL DYNAMICS	
TOLERANCES:		CHECKED: A. J. / M. B.	see CN	SATCOM Technologies	
SURFACE		RF DESIGN: J. Kerpan	see CN	3111 Fujita Street, Torrance CA 90505, (310) 539-6704	
TWO PLACE DECIMAL ±.01		MGD: J. Quicho	see CN	TITLE: 2-PORT Rx/O, C-BAND CP/LP	
THREE PLACE DECIMAL ±.002		ISA: D. Peckham	see CN	SIZE: C CAGE CODE: 50478 DWG No: 114391-8 REV: A	
FOUR PLACE DECIMAL ±.0002		PROJECT:		SCALE: 3:8 WEIGHT: 11.525 LB SHEET 1 of 2	
ANGLES ± 0°30'		THIRD ANGLE PROJECTION	EAR CONTROLLED:	MATERIAL:	
OR BETTER					
Export or re-export subject to 15 CFR 700 - 799					

ITEM NO.	QTY.	PART NUMBER	DESCRIPTION
1	1	112924-7	OMT, C-BAND Rx/O CPR229 I/F
2	1	112568-4	ADAPTER, QUICK DIS/CONNECT
3	1	114605-2	POLARIZER, C-BAND ASSEMBLY
4	1	112558-9	CW, TAPER Ø 2.300 - Ø 2.170
5	2	112564-11	ADAPTER RING, QUICK DIS/CONNECT
6	4	112564-14	BACK PLATE, QUICK DIS/CONNECT ADAPTER
7	16	655547	FSHCS № 4-40 X 3/8 LG
8	3	2-233	O-RING ID 2.859 X .139W
9	8	550286	WASHER, SPLIT № 10
10	8	659240	SHCS № 10-32 X 5/8 LG
11	AR	114539-8	BLACK MAX, № 380
12	AR	6460-4702	PRIMER, POLYURETHANE LT GRAY
13	AR	6409-17875	PAINT, WHITE POLYURETHANE № 17875
14	2	110817-2	IDENTIFICATION LABEL
15	1	110789-14	WAVEGUIDE, CIRCULAR TAPER "RF TEST"
16	1	111348-6	WAVEGUIDE, SQUARE TAPER "RF TEST"



ASSEMBLY

GENERAL DYNAMICS
 SATCOM Technologies
 3111 Fujita Street, Torrance CA 90505, (310) 539-6704

SIZE	CAGE CODE	DWG №	REV
C	50478	114391-8	A
SCALE: 5:8	WEIGHT: 11.525 LB	SHEET	2 of 2