

SPECIFICATIONS

FREQUENCY BAND Rx: 3.625-4.200 GHz
Tx: 5.850-6.425 GHz

INSERTION LOSS Rx: 0.35 dB MAX
Tx: 0.20 dB MAX

VSWR Rx: 1.30:1 MAX
Tx: 1.20:1 MAX

ISOLATION Tx/Rx: 70 dB MIN
Rx/Tx: 70 dB MIN
Rx/Rx: 30 dB MIN

CROSS POL : 35 dB MIN

POWER HANDLING : 1 KWCW

PRESSURIZATION : SEALED TO 2 PSIG

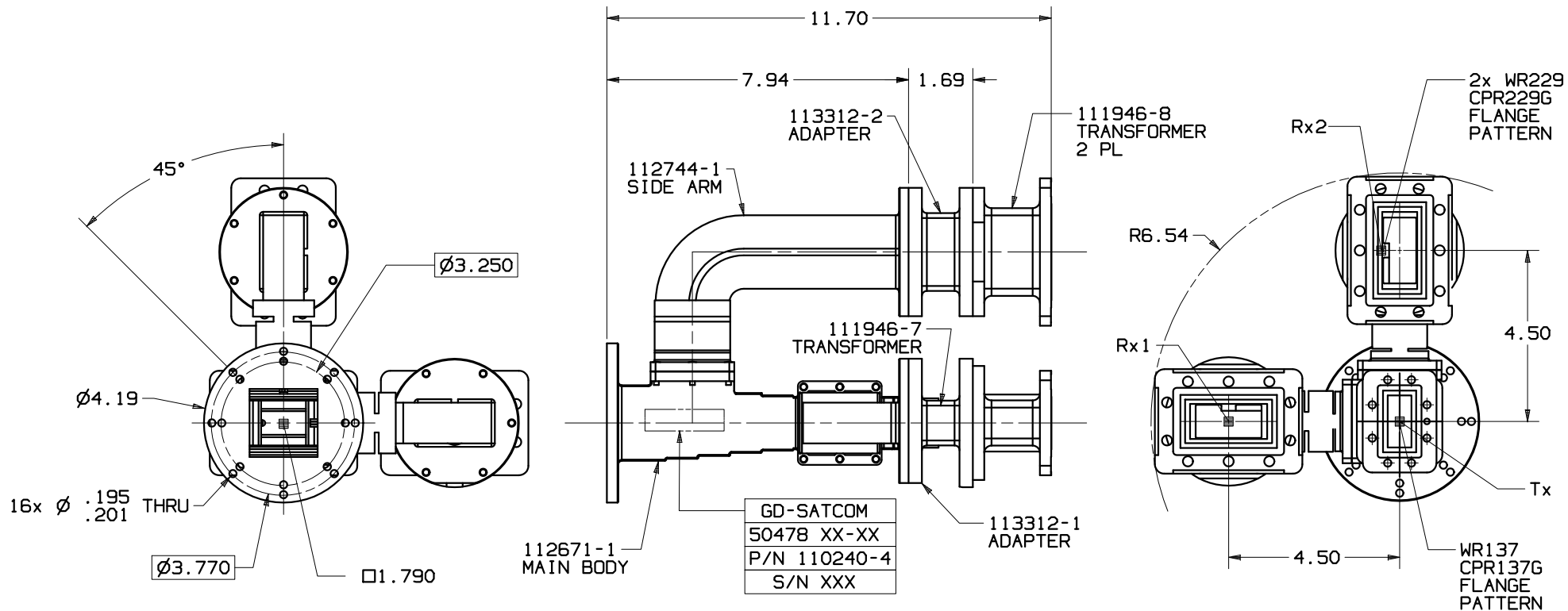
FINISH COMMON PORT
& Rx FLANGE FACES: CHROMATE CONVERSION COATED PER MIL-DTL-5541F, TYPE II, CLASS 1A

Tx FLANGE FACE: ZINC-NICKEL PLATED PER AMS 2417G, TYPE II, CLASS 2

EXTERIOR: WHITE PAINT, COLOR No 17875 PER FED-STD-595

REVISIONS

REV	DESCRIPTION	EFFECTIVE DATE	APPROVED
A	SEE DR No 11735		



UNLESS OTHERWISE SPECIFIED		APPROVALS	DATE	GENERAL DYNAMICS PROPRIETARY	
INTERPRET DIMENSIONING & TOLERANCING PER ANSI Y14.5M-1982. DIMENSIONS ARE IN INCHES. DIMENSIONS SHOWN IN () ARE FOR REFERENCE ONLY. TOLERANCES ARE: SURFACE- TOLERANCES- .XX ±.02 .XXX ±.005 .XXXX ± ANGLES ±0°30' MATERIAL:		DRAWN: C.G. ORTEGA	12-12-06	GENERAL DYNAMICS SATCOM Technologies 3111 Fujita St., Torrance, CA 90505, (310) 539-6704 C-BAND 3-PORT Rx/Tx LINEAR POLARIZED	
		CHECKED: H. Spieleder	12-12-06		
		RF-ENG:			
		MFG-ENG:			
		ENG-MGR: J. Kerpan	12-12-06	110240-4	
		EAR CONTROLLED:			
		Export or re-export subject to 15 CFR 700-799.			
		SIZE	FSCM No	DWG No	REV
		C	50478	110240-4	A
		SCALE:	1:2	SHEET	1

NOTES: UNLESS OTHERWISE SPECIFIED.