

SPECIFICATIONS

FREQUENCY BAND Rx: 3.400 - 4.200 GHz
Tx: 5.625 - 6.425 GHz

INSERTION LOSS Rx: 0.20 dB MAX
Tx: 0.20 dB MAX

VSWR Rx: 1.25:1 MAX
Tx: 1.25:1 MAX

ISOLATION Tx/Rx: 85 dB MIN
Rx/Tx: 85 dB MIN
Rx/Rx: 40 dB MIN
Tx/Tx: 40 dB MIN

CROSSPOL : 35 dB MIN

POWER HANDLING : 5 KW CW EA Tx PORT
(W/ADEQUATE HEAT DISSIPATION)
10 KW CW TOTAL

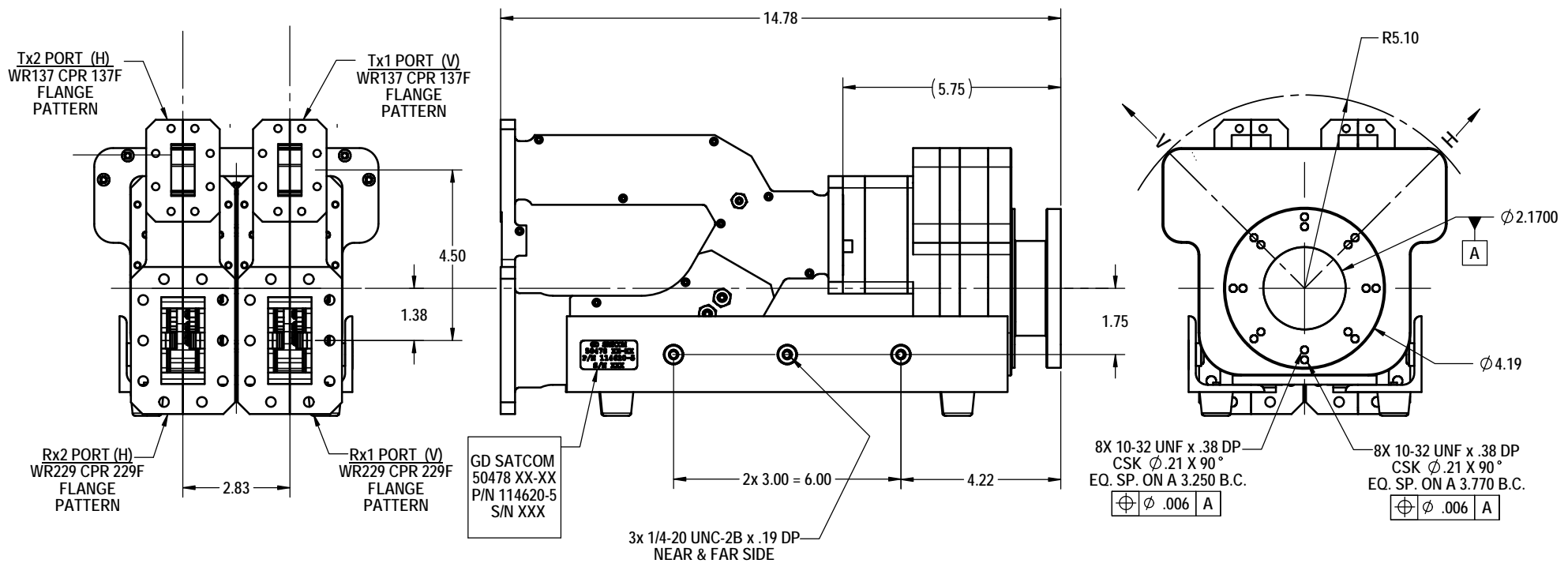
OPERATING TEMP : 115° MAX

ESTIMATED MASS : 20 Lbs

PRESSURIZATION : SEALED TO 2 PSI

FINISH
FLANGE FACES: CHROMATE CONVERSION COATED
EXTERIOR: WHITE PAINT, COLOR No. 17875 PER FED-STD-595

REVISIONS				
ZONE	REV.	DESCRIPTION	DATE	APPROVED
A	A	INITIAL RELEASE	12/20/13	



DO NOT SCALE DRAWINGS		APPROVALS	DATE	GENERAL DYNAMICS PROPRIETARY	
UNLESS OTHERWISE SPECIFIED, INTERPRET DIMENSIONING & TOLERANCING PER ANSI/ASME Y14.5M-2009. DIMENSIONS ARE IN INCHES. DIMENSIONS SHOWN IN () ARE FOR REFERENCE ONLY.		DRAWN: TOVALIN	12/20/13	GENERAL DYNAMICS	
TOLERANCES:		CHECKED:	01/03/14	SATCOM Technologies	
TWO PLACE DECIMAL ±.01		RF DESIGN: J. Wigley		3111 Fujita Street, Torrance CA 90505, (310) 539-6704	
THREE PLACE DECIMAL ±.002		DATE:		C-BAND 4-PORT DIPLEXER, LINEAR POLARIZED	
FOUR PLACE DECIMAL ±.0010		SURFACE FINISH:		TITLE: C-BAND 4-PORT DIPLEXER, LINEAR POLARIZED	
ANGLES ± 0°30'		MATERIAL:		SIZE: CAGE CODE DWG No. 114620-5 REV A	
THIRD ANGLE PROJECTION		MATERIAL:		SCALE: 1:2 WEIGHT: LB SHEET 1 of 2	
Export or re-export subject to 15 CFR 700 - 799					