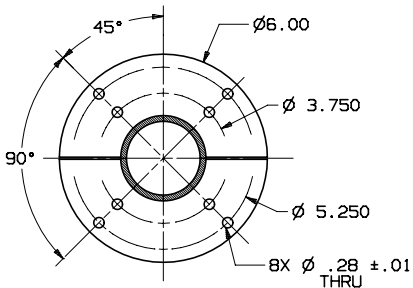


SPECIFICATIONS

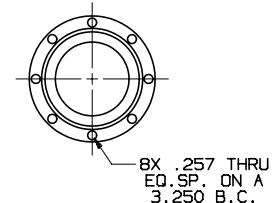
FREQUENCY BAND : 3.625 - 4.200 GHz
 VSWR : 1.20:1 MAX
 AXIAL RATIO : 1.06 (0.5 dB)
 POLARIZATION : RHCP AND LHCP
 f/d : 0.4

FINISH INTERIOR
 & FLANGE FACES: CHEM FILMED PER MIL-C-5541C,
 CLASS 1A
 EXTERIOR: WHITE PAINT COLOR
 NO. 17875 PER FED-STD-595

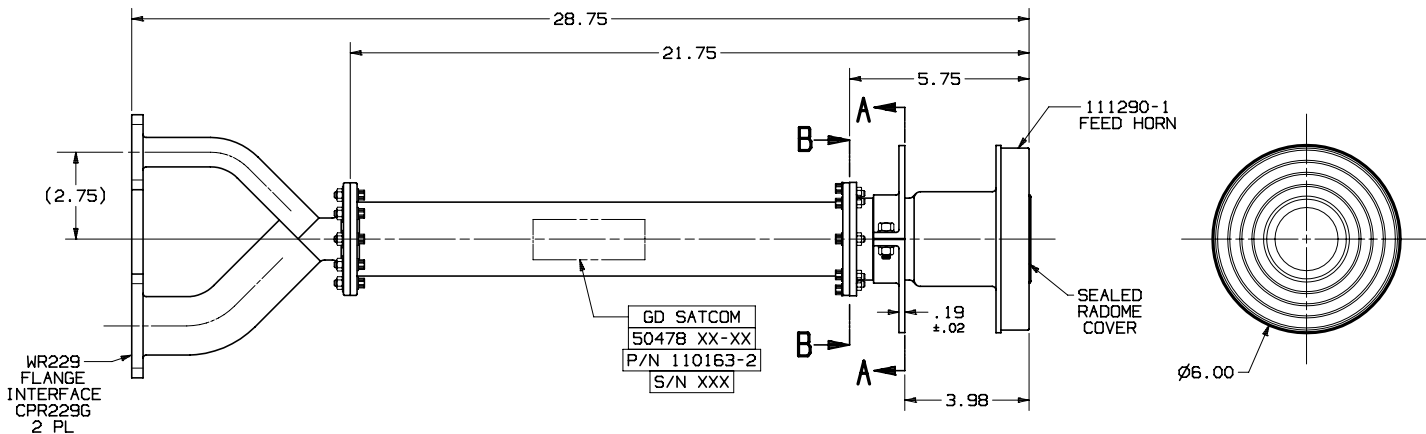
REVISIONS			
REV	DESCRIPTION	DATE	APPROVED
D	SEE REVISION RECORD SHT		



SECTION A-A



SECTION B-B



GD SATCOM
 50478 XX-XX
 P/N 110163-2
 S/N XXX

WR229
 FLANGE
 INTERFACE
 CPR229G
 2 PL

111290-1
 FEED HORN

SEALED
 RADOME
 COVER

Ø6.00

NOTES: UNLESS OTHERWISE SPECIFIED.

UNLESS OTHERWISE SPECIFIED		SIGNATURES	DATE	GENERAL DYNAMICS PROPRIETARY		
DIMENSIONS ARE IN INCHES		DRN: L. TOVALIN	08-01-95	GENERAL DYNAMICS SATCOM Technologies 3111 Fujita St., Torrance, CA 90505, (310) 539-6704 C-BAND 2-PORT Rx/O FEED PRIME FOCUS f/d 0.4		
TOLERANCES-		CHEK: H. SPIELEDER	04-15-93			
SURFACE		RF ENGR:				
.XX ± .02 .XXX ± .005 .XXXX ± . ANGLES ± 0°15'		ENGR:				
MATERIAL		EAR CONTROLLED:		SIZE	FSCM No.	DWG No.
AL CASTING		Export or re-export subject to 15 CFR 700-799.		C	50478	110163-2
FINISH				SCALE: X:X	SHEET 1	