

SPECIFICATIONS

FREQUENCY BAND Rx: 19.7 - 21.2 GHz
Tx: 29.5 - 31.0 GHz

INSERTION LOSS Rx: 0.45 dB MAX
Tx: 0.35 dB MAX

VSWR Rx: 1.25:1 MAX
Tx: 1.25:1 MAX

ISOLATION Rx/Tx: 60 dB MIN
Tx/Rx: 85 dB MIN

APPROX. WEIGHT : 1.0 LBS

PRESSURIZATION : TESTED TO 5.0 PSI

FINISH INTERIOR & FLANGE FACES: CHEMFILED PER MIL-DTL-5541F, CLASS 1A

EXTERIOR: WHITE PAINT, COLOR No. 17875 PER FED-STD-595

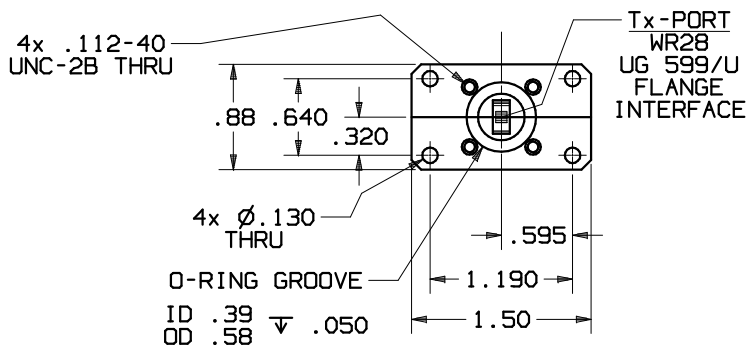
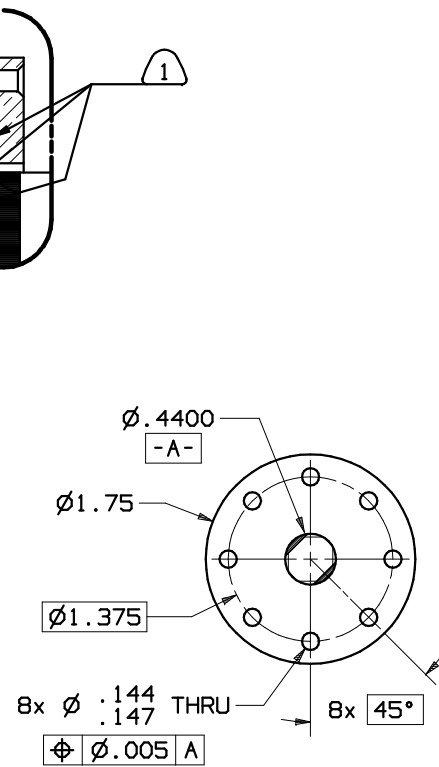
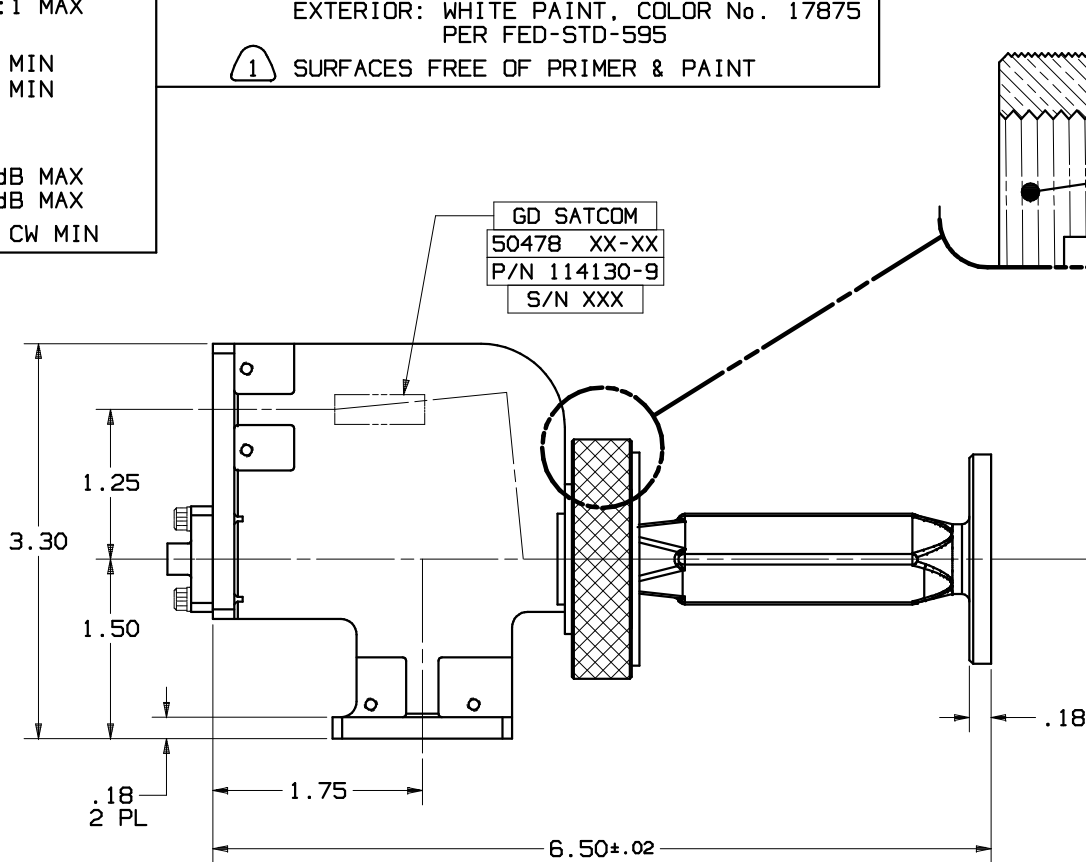
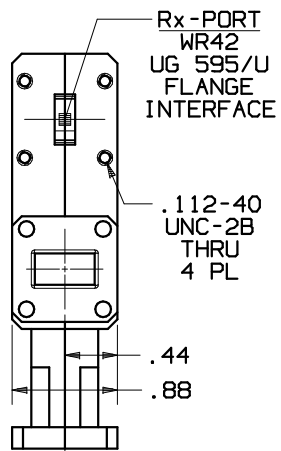
① SURFACES FREE OF PRIMER & PAINT

REVISIONS			
REV	DESCRIPTION	EFFECTIVE DATE	APPROVED
A	SEE CN 13350	04-02-15	J.KERPAN

AXIAL RATIO Rx: 1.00 dB MAX
Tx: 1.00 dB MAX

POWER HANDLING : 500 W CW MIN

GD SATCOM
50478 XX-XX
P/N 114130-9
S/N XXX



UNLESS OTHERWISE SPECIFIED	APPROVALS	DATE	GENERAL DYNAMICS PROPRIETARY
INTERPRET DIMENSIONING & TOLERANCING PER ANSI Y14.5M-1982. DIMENSIONS ARE IN INCHES. DIMENSIONS SHOWN IN () ARE FOR REFERENCE ONLY. TOLERANCES ARE: SURFACE- TOLERANCES- .XX ±.01 .XXX ±.002 .XXXX ±.0010 ANGLES ±0°30'	DRAWN: H. Lim	03-06-13	GENERAL DYNAMICS SATCOM Technologies 3111 Fujita St., Torrance, CA 90505, (310) 539-6704 Ka-BAND 2-PORT DIPLEXER CIRCULAR POLARIZED
	CHECKED: H. Spieleder	03-06-13	
	RF-ENG:		
	ENG-MGR:		
32 ✓ MATERIAL:	EAR CONTROLLED:		SIZE FSCM No DWG No C 50478 114130-9
	Export or re-export subject to 15 CFR 700-799.		

NOTES: UNLESS OTHERWISE SPECIFIED.