

# SPECIFICATIONS

**FREQUENCY BAND** Rx: 18.15 - 20.20 GHz  
Tx: 29.25 - 30.00 GHz

**INSERTION LOSS** Rx: 0.25 dB MAX  
Tx: 0.20 dB MAX

**VSWR** Rx: 1.25:1 MAX  
Tx: 1.25:1 MAX

**ISOLAION** Tx/Rx: 85 dB MIN  
Rx/Tx: 85 dB MIN  
Rx/Rx: 20 dB MIN  
Tx/Tx: 20 dB MIN

**AXIAL RATIO** Rx: 1.00 dB MAX  
Tx: 0.50 dB MAX

**PWR HANDLING** : 1.0 kW CW (500 W PER Tx-PORT)

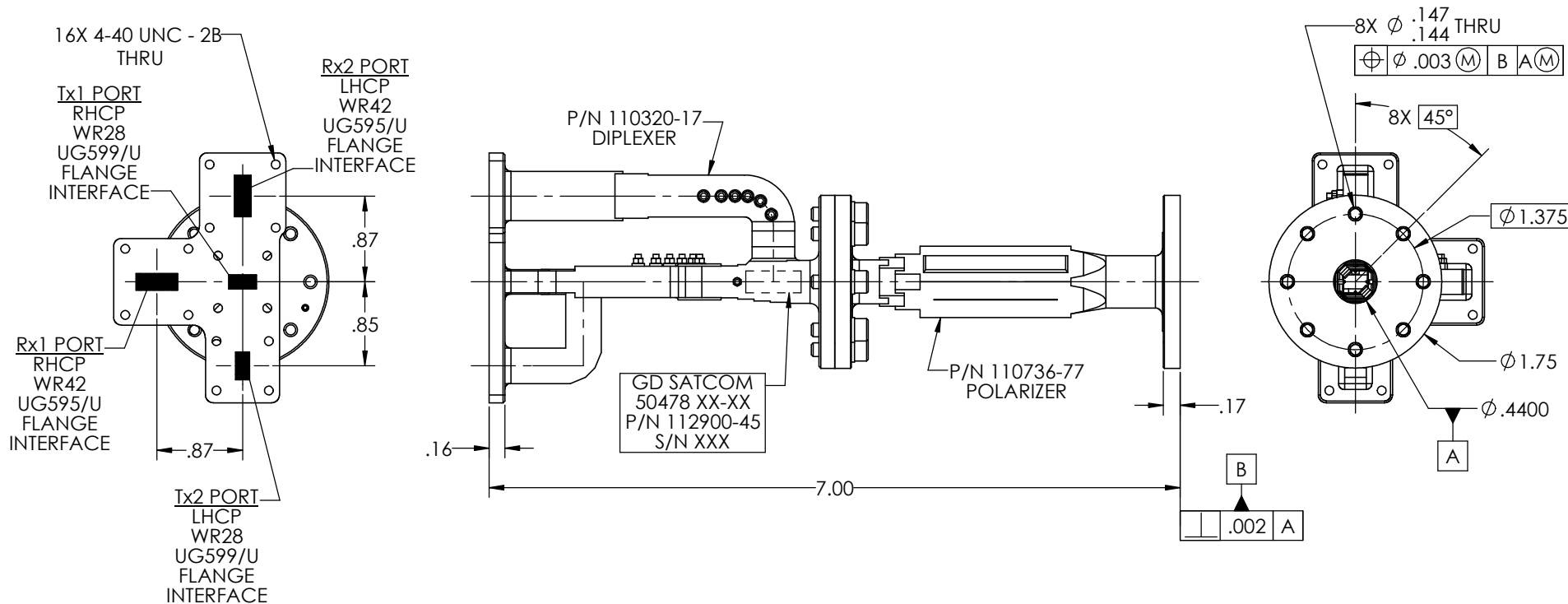
**PRESSURIZATION** : SEALED TO 5.0 PSIG

**FINISH**

Rx AND Tx PORT : COPPER ALLOY  
COMMON PORT : ZINC-NICKEL PLATED  
(PER AMS 2417G, TYPE II, CLASS 2)  
EXTERIOR: WHITE PAINT, COLOR No 17875  
PER FED-STD-595

## REVISIONS

ZONE	REV.	DESCRIPTION	DATE	APPROVED
	A	INITIAL RELEASE, CN № 13318	2015-3-5	J. Mitchell



NOTES: UNLESS OTHERWISE SPECIFIED.

DO NOT SCALE DRAWINGS		APPROVALS	DATE	GENERAL DYNAMICS PROPRIETARY	
UNLESS OTHERWISE SPECIFIED, INTERPRET DIMENSIONING & TOLERANCING PER ANSI/ASME Y14.5M-2009. DIMENSIONS ARE IN INCHES. DIMENSIONS SHOWN IN [ ] ARE FOR REFERENCE ONLY.		DRAWN: H. Lim	2015-3-5	<b>GENERAL DYNAMICS</b>	
TOLERANCES:		CHECKED: A. J. / M. B.	see CN	SATCOM Technologies	
TWO PLACE DECIMAL ±.01		RF DESIGN: R. Jaranilla	see CN	3111 Fujita Street, Torrance CA 90505, (310) 539-6704	
THREE PLACE DECIMAL ±.002		MFG: J. Quicho	see CN	TITLE:	
FOUR PLACE DECIMAL ±.0010		IGN: D. Peckham	see CN	<b>4-PORT CP, Ka-BAND DIPLEXER</b>	
ANGLES ± 0°30'		ENG MGR: J. Mitchell	see CN	SIZE CAGE CODE DWG No	
THIRD ANGLE PROJECTION	EAR CONTROLLED:	PROJECT:		C 50478	112900-45
	Export or re-export subject to 15 CFR 700 - 799	MATERIAL		SCALE: 5:4	REV A
				WEIGHT: 0.753 LB	SHEET 1 of 2