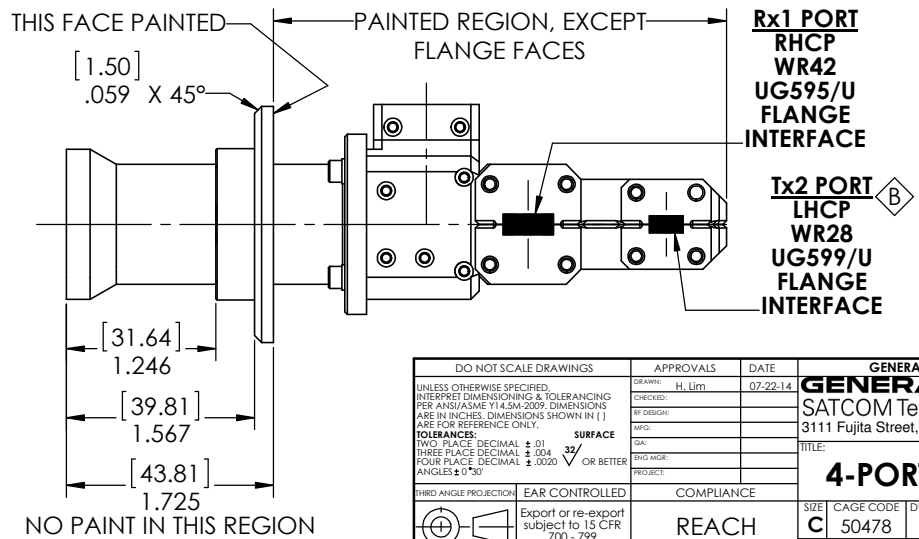
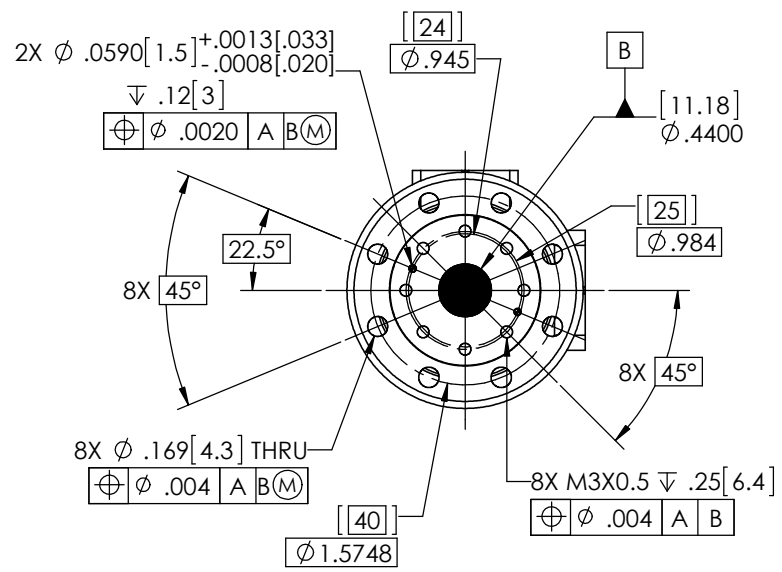
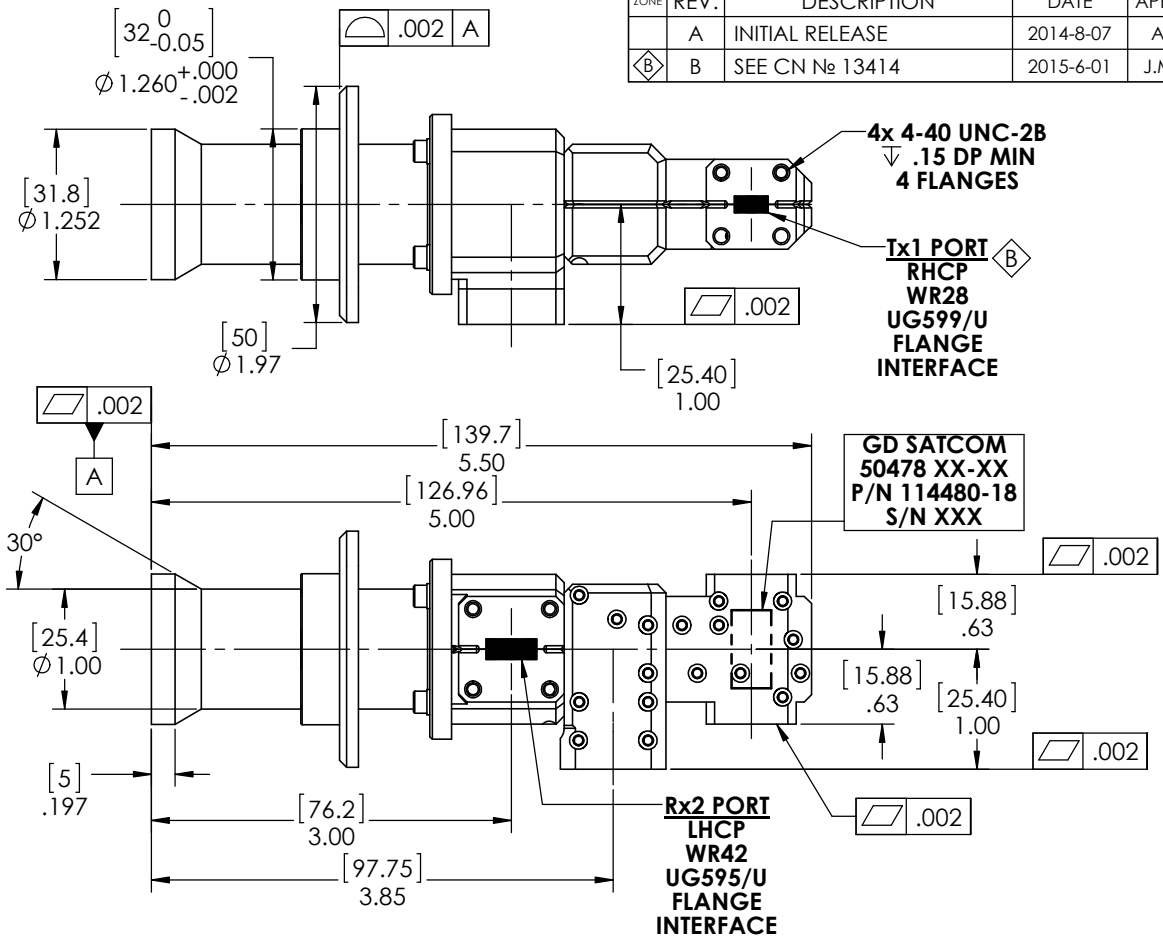


ELECTRICAL SPECIFICATIONS

FREQUENCY BAND	Rx: 19.2 - 21.2 GHz Tx: 29.0 - 31.0 GHz
INSERTION LOSS	Rx: 0.50 dB MAX AT 19.20-20.20 GHz 0.45 dB MAX AT 20.20-21.20 GHz Tx: 0.40 dB MAX
VSWR	Rx: 1.25:1 MAX Tx: 1.25:1 MAX
ISOLATION	Tx/Rx: 85 dB MIN Rx/Tx: 85 dB MIN Tx/ Tx: 20 dB MIN Rx/Rx: 20 dB MIN
AXIAL RATIO	Rx: 1.21 dB MAX AT 19.2 to 19.7 GHz 0.75 dB MAX AT 19.7 to 21.2 GHz 0.50 dB MAX AT 20.2 to 21.2 GHz Tx: 0.75 dB MAX AT 29.0 to 30.0 GHz 0.50 dB MAX AT 30.0 to 31.0 GHz

MECHANICAL SPECIFICATIONS

POWER HANDLING	: 500 W PER Tx PORT (1.0 kW TOTAL)
PRESSURIZATION	: SEALED TO 5.0 PSIG
FINISH	FLANGE FACES : ALUMINUM ALLOY EXTERIOR : WHITE PAINT, COLOR № 17875 PER FED- STD-595



REVISIONS				
ZONE	REV.	DESCRIPTION	DATE	APPROVED
	A	INITIAL RELEASE	2014-8-07	A.Jafari
B	B	SEE CN № 13414	2015-6-01	J.Mitchell

DO NOT SCALE DRAWINGS		APPROVALS	DATE	GENERAL DYNAMICS PROPRIETARY	
UNLESS OTHERWISE SPECIFIED INTERPRET DIMENSIONING & TOLERANCING PER ANSI/ASME Y14.5M-2009. DIMENSIONS ARE IN INCHES. DIMENSIONS SHOWN IN [] ARE FOR REFERENCE ONLY.		DRAWN: H. Lim	07-22-14	GENERAL DYNAMICS	
TOLERANCES:		CHECKED:		SATCOM Technologies	
THREE PLACE DECIMAL ± .004		RF DESIGN:		3111 Fujita Street, Torrance CA 90505, (310) 539-6704	
FOUR PLACE DECIMAL ± .0020		AWG:		TITLE:	
ANGLES ± 0°30'		GA:		4-PORT CP, Ka-BAND	
THIRD ANGLE PROJECTION		ENG MGR:		SIZE	CAGE CODE
EAR CONTROLLED		PROJECT:		C	50478
Export or re-export subject to 15 CFR 700 - 799		COMPLIANCE		DWG №	114480-18
REACH				SCALE:	5:4
				WEIGHT:	0.6255 LB
				SHEET	1 of 2

NOTES: UNLESS OTHERWISE SPECIFIED.