

SPECIFICATIONS

FREQUENCY BAND RX: 10.70 - 12.75 GHz
 TX: 17.30 - 18.40 GHz

INSERTION LOSS RX: 0.25 dB MAX
 TX: 0.25 dB MAX

VSWR RX: 1.30:1 MAX ¹
 TX: 1.30:1 MAX ¹

ISOLATION TX/RX: 85 dB MIN
 RX/TX: 85 dB MIN

AXIAL RATIO : 2.0 dB MAX ¹

POWER HANDLING : 2 KW CW

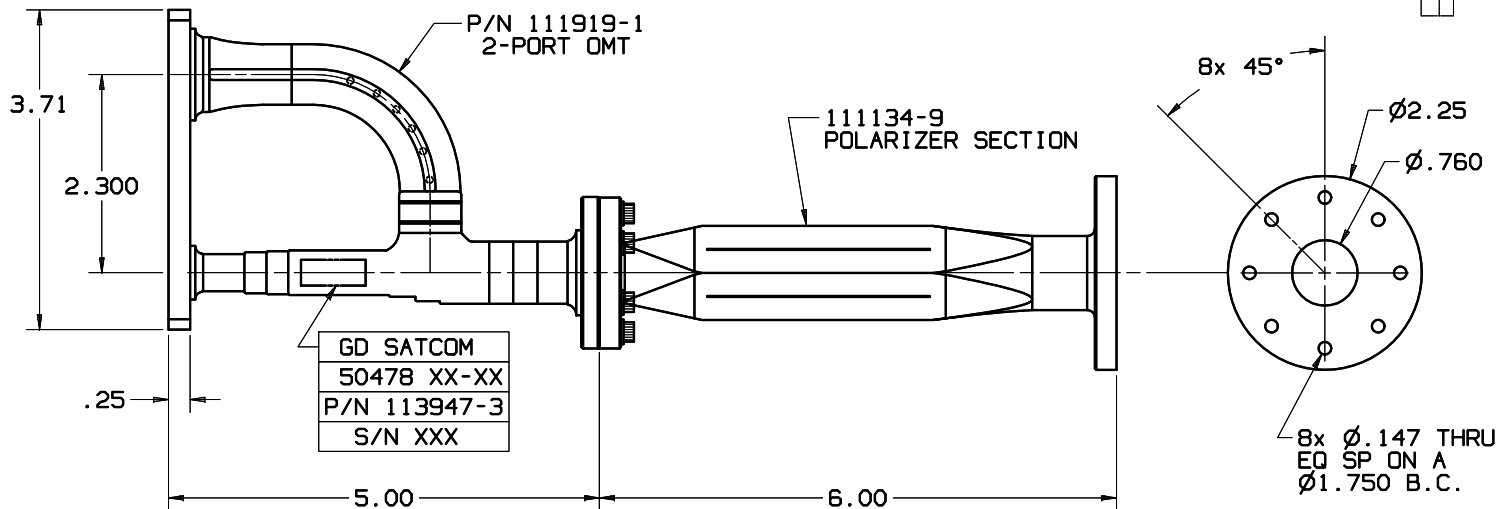
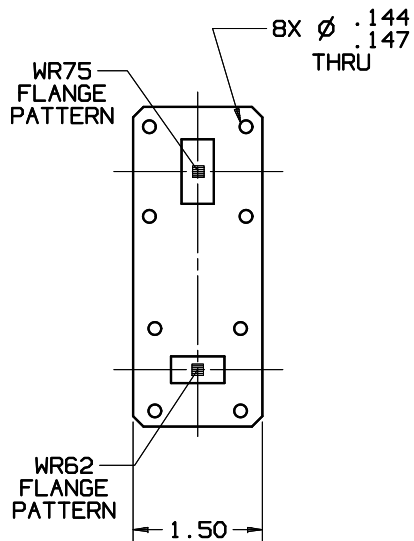
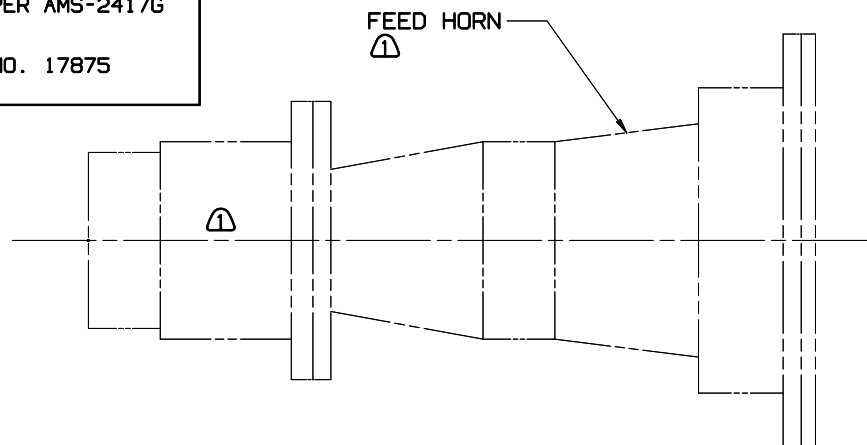
PRESSURIZATION : SEALED TO 5.0 PSIG

FINISH
 2-PORT FLANGE : BRASS
 FACES

COMMON PORT : ZINC-NICKEL PLATED PER AMS-2417G
 FLANGE FACE TYPE II, CLASS 2

EXTERIOR : WHITE PAINT, COLOR NO. 17875
 PER FED-STD-595

REVISIONS			
REV	DESCRIPTION	DATE	APPROVED
-	INITIAL RELEASE	06-16-10	



¹ TEST AND VERIFICATION INTO CUSTOMER SUPPLIED FEED HORN ASSEMBLY 018640-01/017305-01

NOTES: UNLESS OTHERWISE SPECIFIED.

UNLESS OTHERWISE SPECIFIED		SIGNATURES	DATE	GENERAL DYNAMICS PROPRIETARY	
DIMENSIONS ARE IN INCHES		DRAWN: J. QUICHO	01-06-10	GENERAL DYNAMICS SATCOM Technologies, Inc. 3111 Fujita St., Torrance, CA 90505, (310) 539-6704 Ku-BAND, 2-PORT CIRCULAR POLARIZED	
TOLERANCES-		CHECKED:			
SURFACE .XX ±.01		ENGR:			
.XXX ±.002		ENGR:			
63 ✓ ANGLES		EAR CONTROLLED:		SIZE	FSCM No.
MATERIAL		Export or re-export subject to 15 CFR 700-799.		C	50478
FINISH				DWG No.	113947-6
				SCALE:	REV -
					SHEET 1