

SPECIFICATIONS

FREQUENCY BAND RX: 10.70 - 12.50 GHz
TX: 12.75 - 14.50 GHz

INSERTION LOSS RX: 0.80 dB MAX
TX: 0.80 dB MAX

VSWR RX: 1.25:1 MAX
TX: 1.25:1 MAX

ISOLATION TX/RX: 115 dB MIN
RX/TX: 70 dB MIN
TX/TX: 35 dB MIN
RX/RX: 35 dB MIN

CROSSPOL : 35 dB MIN

POWER HANDLING : 2.0 KW CW (1 KW PER TX PORT)

APPROXIMATE HEAT DISSIPATION AT 2 KW: 300 W

TOTAL HEAT DISSIPATION AREA : 635 IN²

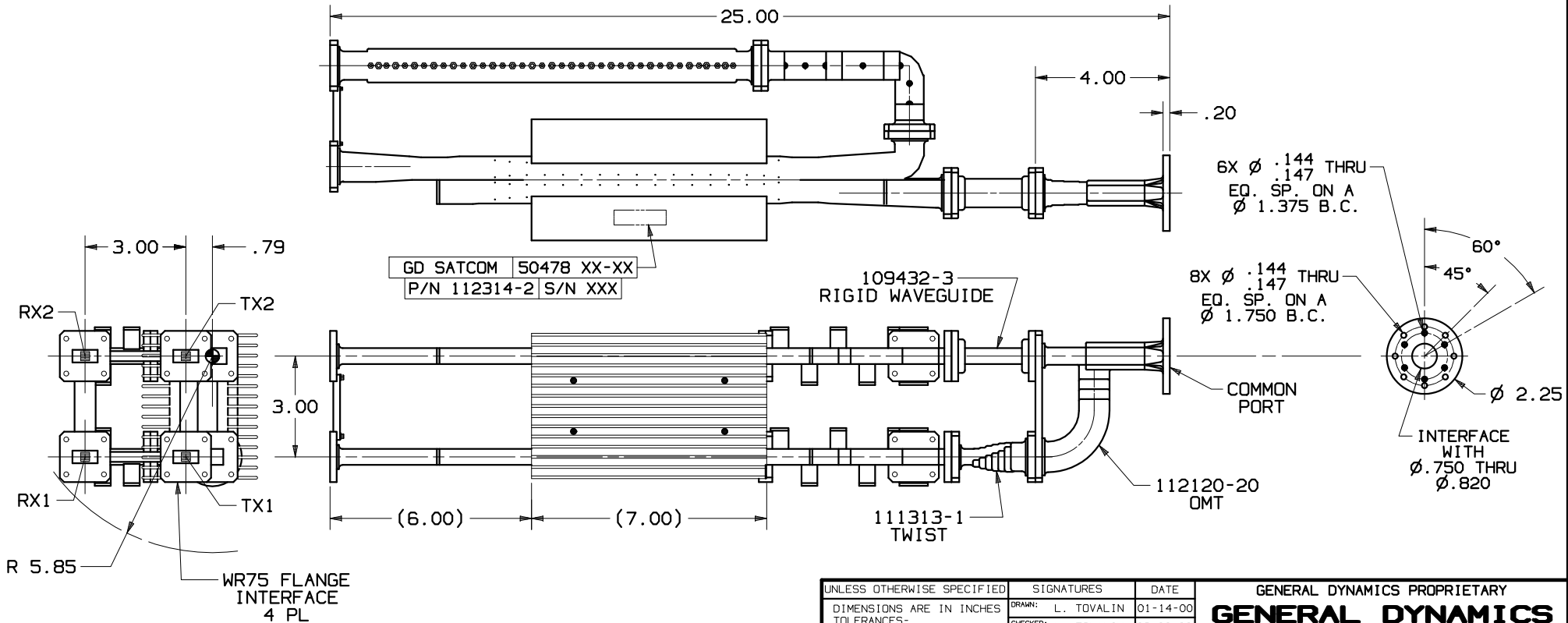
MAX OPERATING TEMP : 115°C

PRESSURIZATION : SEALED TO 5.0 PSIG.

FINISH COMMON PORT: CHROMATE CONVERSION COATING
PER MIL-DTL-5541F
TYPE II, CLASS 1A

RX AND TX PORT: CHROMATE CONVERSION COATED
EXTERIOR: BLACK PAINT, COLOR No 37038 PER
FED-STD-595

REVISIONS			
REV	DESCRIPTION	DATE	APPROVED
B	SEE ECN#2594	01-14-10	



NOTES: UNLESS OTHERWISE SPECIFIED.

UNLESS OTHERWISE SPECIFIED	SIGNATURES	DATE
DIMENSIONS ARE IN INCHES TOLERANCES-	DRAWN: L. TOVALIN	01-14-00
SURFACE .XX ±.03 .XXX ±.003 .XXXX ±. ANGLES± 1°00'	CHECKED: L. TOVALIN	08-22-00
	ENGR:	
	ENGRB:	
MATERIAL	EAR CONTROLLED:	
FINISH	Export or re-export subject to 15 CFR 700-799.	

GENERAL DYNAMICS PROPRIETARY		
GENERAL DYNAMICS SATCOM Technologies 3111 Fujita St., Torrance, CA 90505, (310) 539-6704		
Ku-BAND 4-PORT DIPLEXER HP		
SIZE	FSCM NO.	DWG NO.
C	50478	112314-2
SCALE: 2:1		REV B
		SHEET 1