

SPECIFICATIONS

FREQUENCY BAND RX: 10.70 - 12.50 GHz
TX: 12.75 - 14.50 GHz

INSERTION LOSS RX: 0.80 dB MAX
TX: 0.80 dB MAX

VSWR RX: 1.25:1 MAX
TX: 1.25:1 MAX

ISOLATION TX/RX: 115 dB MIN
RX/TX: 70 dB MIN
TX/TX: 35 dB MIN
RX/RX: 35 dB MIN

CROSSPOL : 35 dB MIN

POWER HANDLING : 2.0 KW CW (1 KW PER TX PORT)

APPROXIMATE HEAT DISSIPATION AT 2 KW: 300 W

TOTAL HEAT DISSIPATION AREA : 635 IN²

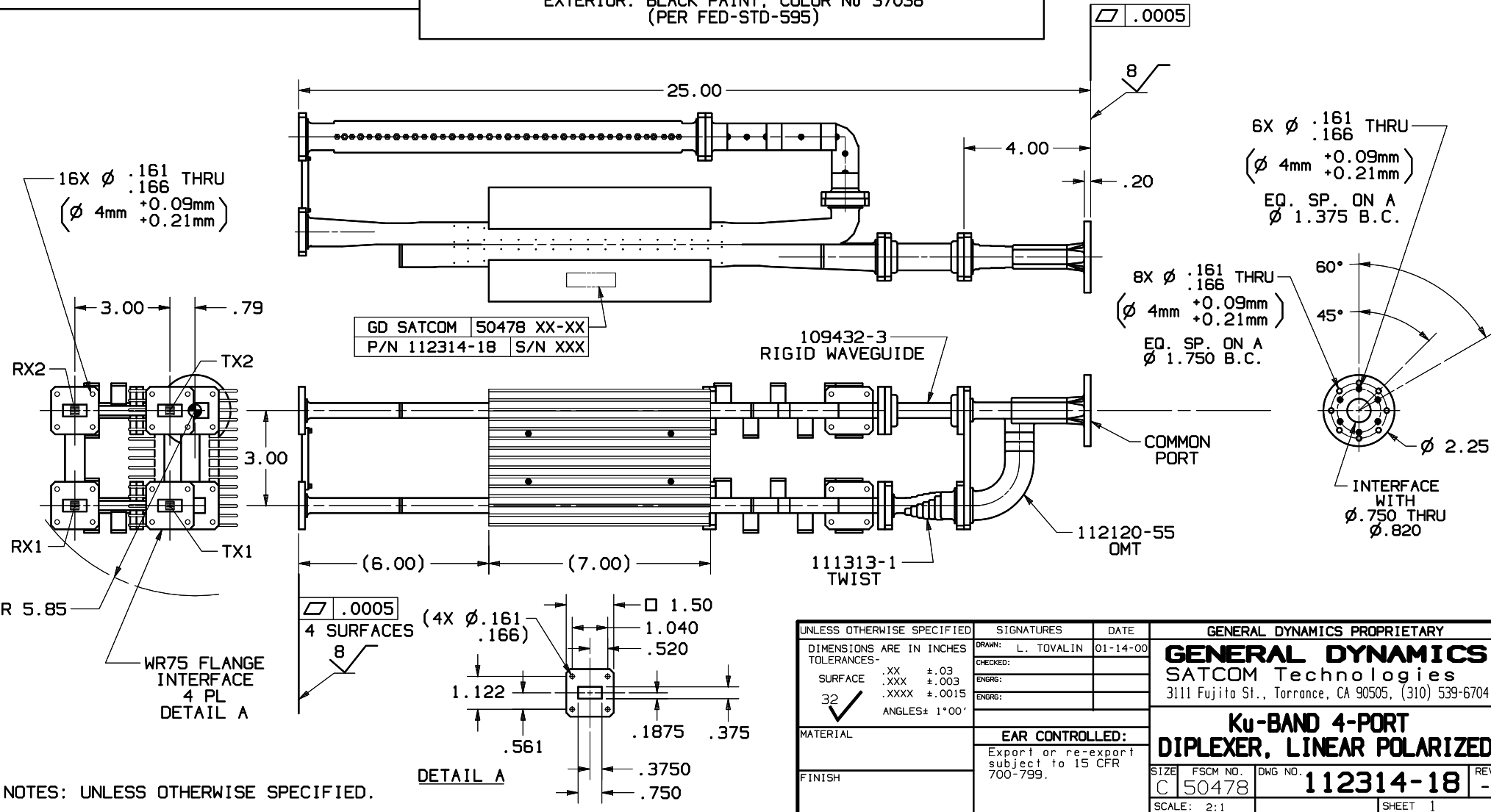
MAX OPERATING TEMP : 115°C

PRESSURIZATION : SEALED TO 5.0 PSIG.

FINISH COMMON PORT: CHROMATE CONVERSION COATING (PER MIL-DTL-5541F, TYPE II, CL 1A)

RX AND TX PORT: CHROMATE CONVERSION COATED
EXTERIOR: BLACK PAINT, COLOR No 37038 (PER FED-STD-595)

REVISIONS			
REV	DESCRIPTION	DATE	APPROVED
-	INITIAL RELEASE	21MAY13	



UNLESS OTHERWISE SPECIFIED DIMENSIONS ARE IN INCHES TOLERANCES - SURFACE .XX ±.03 .XXX ±.003 .XXXX ±.0015 ENGRG: 32 ✓ ANGLES ± 1°00'	SIGNATURES	DATE	GENERAL DYNAMICS PROPRIETARY	
	DRAWN: L. TOVALIN	01-14-00	GENERAL DYNAMICS SATCOM Technologies 3111 Fujita St., Torrance, CA 90505, (310) 539-6704	
	CHECKED:		Ku-BAND 4-PORT DIPLEXER, LINEAR POLARIZED	
	ENGRG:		SIZE: C	FSCM NO. 50478
MATERIAL	EAR CONTROLLED: Export or re-export subject to 15 CFR 700-799.		DWG NO. 112314-18	REV -
FINISH			SCALE: 2:1	SHEET 1