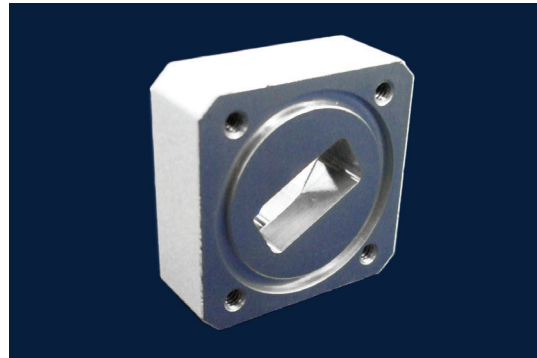




# MICROWAVE COMPONENT

## KU-BAND WAVEGUIDE TWIST ADAPTER



### SPECIFICATIONS

Frequency Range	10.7 to 14.5 GHz
VSWR	1.15 : 1
Waveguide Flange	WR-75 (both faces)
Operational Temperature	-30°C to +70°C
Dimensions (L x W x H)	38.1 mm x 38.1 mm x 14.2 mm (1.5 in x 1.5 in x 0.56 in)
Weight	45.66 g (0.10 lb)

### HOW TO ORDER

**WTA-1**

### MECHANICAL DIAGRAM

