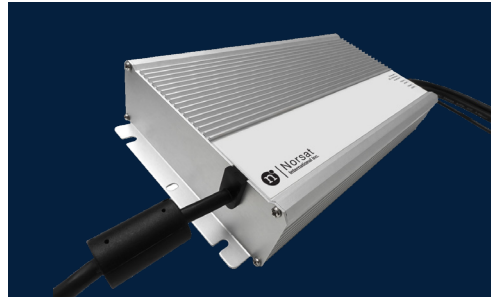




MICROWAVE COMPONENT

600W AC/DC OUTDOOR POWER SUPPLY

SPECIFICATIONS



Electrical Specifications

Input Voltage	90 ~ 305 VAC
Input Frequency	47 ~ 63 Hz
Rated Current	6.25 A
Output Power	600 W
Output Voltage	+48V
Output Voltage Accuracy	±5 % of output voltage
Output Voltage Ripple & Noise	1.0V Peak-to-Peak

Environmental Specifications

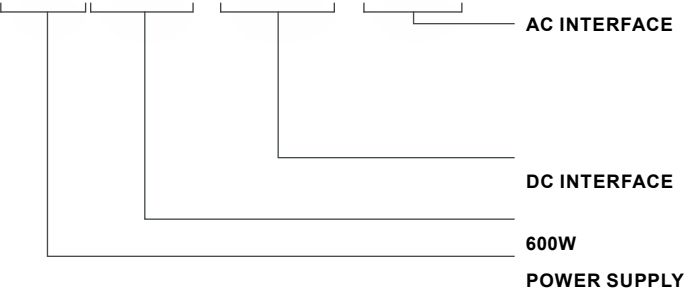
Operating Temperature	-35 to +70°C
Storage Temperature	-40 to +85°C

APPLICATIONS

- Provide DC power for Norsat ATOM BUC & SSPA
- Rugged extruded aluminum chassis
- Environmentally sealed and moisture resistant (IP67)
- Certifications: CE, EN61000-6-2, EN61000-6-3

HOW TO ORDER

PS600-AT1-NA



Mechanical Specifications

AC Input Interface	Plug:	5m (16.5 ft) cable NA NEMA 5/15 UK BS 1363 EU CEE 7/7 AU AS/NZS 3112 IEC 60320 C14 CN Type I
DC Output Cable (2m)		6.0 ft (2m) cable AT1 Socket reference: PTO6E-12-4S-476 AT2 Socket reference: AC06E22-22S-472
Dimensions		280 mm x 144 mm x 48.5 mm (11.02 in x 5.66 x 1.90 in)
Weight		3.9 kg (8.59 lb)
Color		Silver
Cooling		Passive / Fanless

NA = North America
UK = United Kingdom
EU = Europe
AU = Australia
IEC = IEC
CN = China

AT1: PTO6E-12-4S(SR) DC out
AT2: MS3106F22-22S DC out



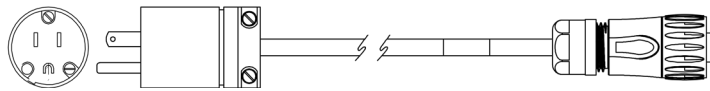


ACCESSORY OPTIONS

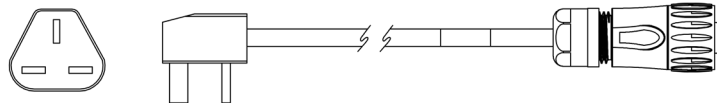
ADDITIONAL	AC POWER CORD 30cm (12 in)
NA Plug	ACPC-ATPS-NA
UK Plug	ACPC-ATPS-UK
EU Plug	ACPC-ATPS-EU
AU Plug	ACPC-ATPS-AU
IEC Plug	ACPC-ATPS-IEC
CN Plug	ACPC-ATPS-CN

MECHANICAL DIAGRAM

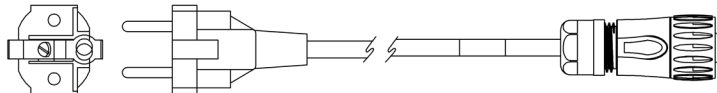
NA Plug



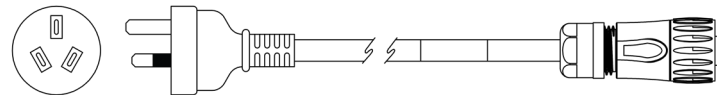
UK Plug



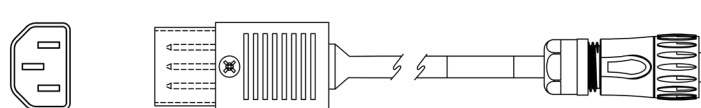
EU Plug



AU Plug



IEC Plug



CN Plug

