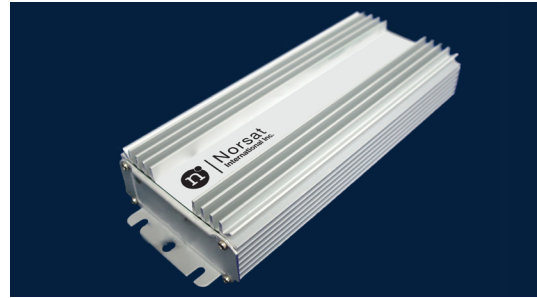




MICROWAVE COMPONENT

300W AC/DC OUTDOOR POWER SUPPLY



SPECIFICATIONS

Electrical Specifications

Input Voltage	90 ~ 305 VAC
Input Frequency	47 ~ 63 Hz
Rated Current	6.25 A
Output Power	300 W
Output Voltage	+48 V
Output Voltage Accuracy	±5 % of output voltage
Output Voltage Ripple & Noise	1.0V Peak-to-Peak

Environmental Specifications

Operating Temperature	-35 to +70°C
Storage Temperature	-40 to +85°C

Mechanical Specifications

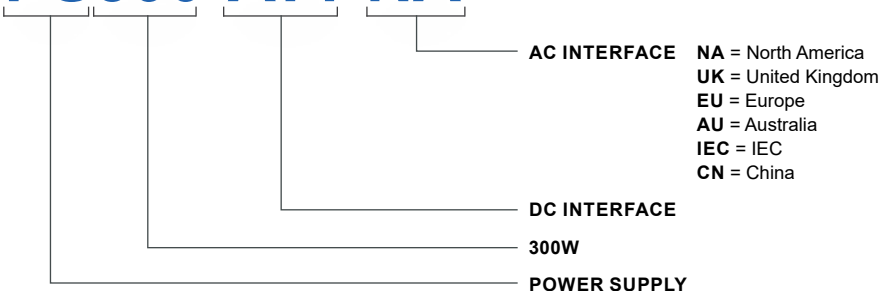
AC Input Interface	Plug:	5m (16.5 ft) cable
		NA NEMA 5/15
		UK BS 1363
		EU CEE 7/7
		AU AS/NZS 3112
DC Output Cable (2m)		IEC 60320 C14
		CN Type I
DC Output Cable (2m)		6.0 ft (2m) cable
		Socket reference: PTO6E-12-4S (SR)
Dimensions		251 mm x 98 mm x 44.5 mm (9.88 in x 3.85 x 1.75 in)
Weight		1.54 kg (3.39 lb)
Color		Silver
Cooling		Passive / Fanless

APPLICATIONS

- Provide DC power for Norsat ATOM BUC & SSPA
- Rugged extruded aluminum chassis
- Environmentally sealed and moisture resistant (IP67)
- Certifications: CE, EN61000-6-2, EN61000-6-3

HOW TO ORDER

PS300-AT1-NA





Norsat
International Inc.

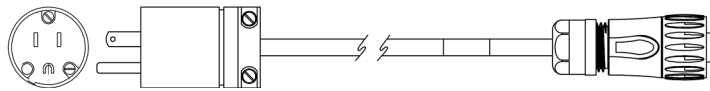
Innovative Communication Solutions

ACCESSORY OPTIONS

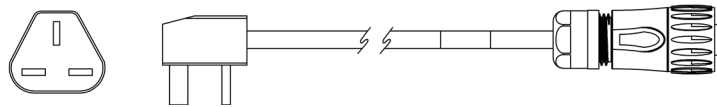
ADDITIONAL	AC POWER CORD 30cm (12 in)
NA Plug	ACPC-ATPS-NA
UK Plug	ACPC-ATPS-UK
EU Plug	ACPC-ATPS-EU
AU Plug	ACPC-ATPS-AU
IEC Plug	ACPC-ATPS-IEC
CN Plug	ACPC-ATPS-CN

MECHANICAL DIAGRAM

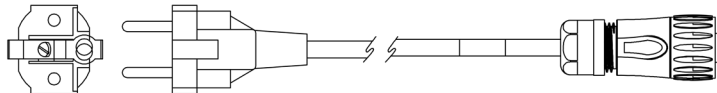
NA Plug



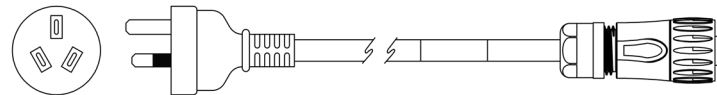
UK Plug



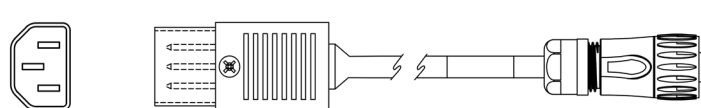
EU Plug



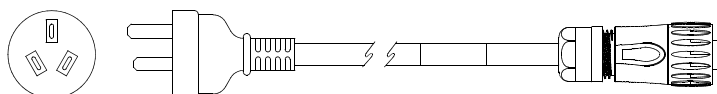
AU Plug



IEC Plug



CN Plug



Esatcom Inc
Norsat authorized distributor

Tel
718.276.0800

Email
sales@esatcom.com